

LEA Name : Freedom Area SD  
Address : 1702 School Street  
Freedom , PA 15042

County : Beaver  
AUN Number : 127042853  
LEA Type : SD

# Annual Financial Report Accuracy Certification Statement

For Fiscal Year Ending  
**6/30/2021**

Pennsylvania Department of Education  
&

Office of Comptroller Operations

PDE-2056: Intermediate Unit

PDE-2057: School District, AVTS/CTC, Charter School,  
and Special Program Jointure

**CERTIFICATION: By signing this page I agree that the electronic data submitted is a complete and accurate statement of the financial operations and status of the local education agency for the fiscal year. It has been prepared in accordance with generally accepted accounting principles and established Commonwealth of PA reporting guidelines.**

  
Chief School Administrator Signature

Date 11/23/21

  
Board Secretary Signature

Date 11/23/21

Erin Bluedorn

(724)775-7644 Ext :130

Contact Person

Contact Person Telephone Number

ebluedorn@freedomarea.org

(724)775-7434

Contact Person E-mail Address

Contact Person Fax Number

# Audit Certification

## Annual Financial Report:

For Fiscal Year Ending **6/30/2021**

(Pursuant to PA School Code Section 218(b))

LEA Name : Freedom Area SD  
AUN Number : 127042853  
County : Beaver

Audit Certification Due:  
12/31/2021

This certification is applicable to the Annual Financial Report data submitted through the Consolidated Financial Reporting System (CFRS).

CERTIFICATION: By signing this page I agree that the financial statements of the school have been properly audited as noted above pursuant to Article XXIV, and in the auditor's professional opinion, the Annual Financial Report (PDE-2057) submitted through CFRS is materially consistent with the audited financial statements.

Chief School Administrator

*Erin Blueborn*  
Signature

11/23/21  
Date

Board Secretary

*EBR, CPA*  
Signature

11/23/21  
Date

Erin Blueborn

Contact Person

eblueborn@freedomarea.org

Contact Person E-mail Address

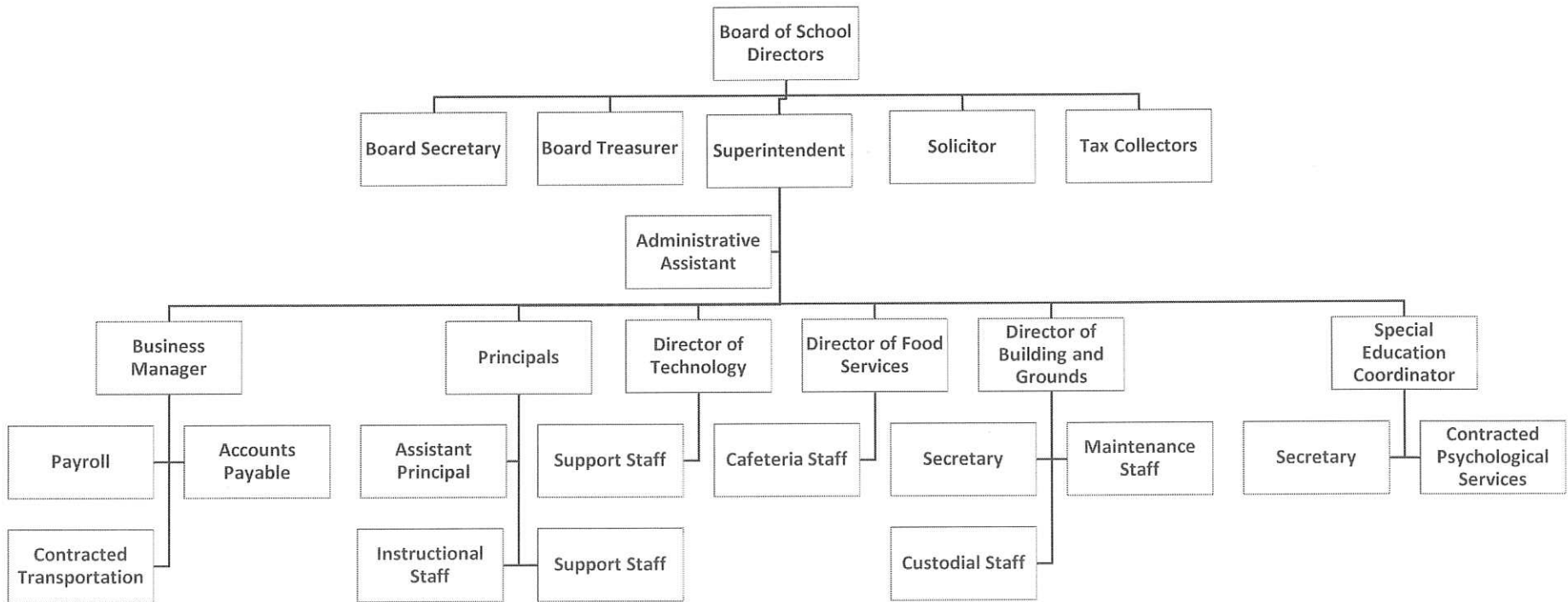
(724)775-7644

Ext :130

Contact Person Telephone Number

(724)775-7434

Contact Person Fax Number



Book	Policy Manual
Section	600 Finances
Title	GASB Statement 34
Code	622
Status	Active
Adopted	April 5, 2001
Last Revised	September 9, 2003

### **Purpose**

The Board of School Directors recognizes the need to implement the required accounting and financial reporting standards promulgated by the Governmental Accounting Standards Board (GASB). GASB Statement 34 was issued to provide new and additional information to the diverse users of district financial statements. In addition to the information contained in previous financial reporting, GASB 34 will now provide information in a highly aggregated manner looking at the long-term financial health of the school district. This new information will require school districts to account for capital assets in a manner different than previously recorded. The intent is to provide an additional set of entity-wide financial statements more similar to the private sector.

The primary objectives of GASB 34 include:

1. New entity-wide financial statements reflecting the overall financial position of the district.
2. Long-term focus for school district activities.
3. Narrative overview and analysis.
4. Information on major funds.
5. Expanded budgetary reporting.

It is important to note that the methods, calculations and procedures for determining the budgetary process of the school district will not be affected by the implementation of the new standards. The information contained in previous financial statements will largely be in the same format.

### **Authority**

Governmental Accounting Standards Board Statement 34.

### **Delegation of Responsibility**

The Board of School Directors delegates to the Business Manager, in cooperation with the local independent auditor, the responsibility to coordinate the compilation and preparation of all information necessary to implement this policy in accordance with district administrative procedures.

### **Guidelines**

#### **Requirements**

Capitalized Assets -

A capitalized asset shall be any asset acquired by donation or purchase that has a useful life of longer than one (1) year or extends the life of another capitalized asset or increases its value and meets a specific dollar threshold. At management's discretion, and in conjunction with the local auditor, capital assets purchased with long-term debt may be capitalized regardless of the specific dollar threshold for the type of class of asset acquired.

#### Value of Assets -

All capitalized assets shall be recorded at historical cost at acquisition date or estimated cost if acquired prior to the date of the initial inventory. Any donated capital asset shall be recorded at the date of donation using the fair market value of the item at that date.

#### Depreciation -

Depreciation shall be based on the straight-line method of depreciation over the estimated useful life of each depreciable asset or group of assets. Periodically, management shall evaluate the estimated useful life of each depreciable asset to determine if revision of such estimate is required.

#### Dollar Threshold -

A dollar threshold for each asset shall be set at an appropriate level. Management should periodically review these levels with assistance from the local independent auditor and make any modifications necessary.

<u>Val Number</u>	<u>Description</u>	<u>Justification</u>
41162	<p>Expenditure Detail, Salaries (Object 100) and Benefits (Object 200 series): Amounts must be entered for both Salaries and Benefits.</p> <p>Please verify following fund and function codes: Fund 10 Function 2511;</p>	Business Manager retired and was due benefits, but the replacement was a contractor, not a hired employee.
42420	<p>Expenditure Detail: Total current year 2700-513 expenditure varies from prior year by 10%. Correct the data or enter a justification.</p> <p>2700-513, AFR Exp Detail: \$1,001,450.77 2700-513, PY AFR Amount: \$1,114,841.40</p>	Transportation needs were reduced due to COVID-19 pandemic.
50400	<p>SESS - 2120 Guidance Services: SESS Schedule amounts for Special Education vary from prior year by 40% or more. Correct the data or enter a justification.</p> <p>SESS Schedule 2120: \$185,797.41 Prior Year SESS Schedule 2120: \$130,829.65</p>	Newly created counseling position created in current year. That, in addition to overall increased costs, led to the year over year increase.
50440	<p>SESS - 2260 Instruction and Curriculum Development Services: SESS Schedule amounts for Special Education vary from prior year by 40% or more. Correct the data or enter a justification.</p> <p>SESS Schedule 2260: \$20,216.29 Prior Year SESS Schedule 2260: \$33.61</p>	Prior year activities severely restricted due to COVID-19 pandemic.
50450	<p>SESS - 2350 Legal and Accounting Services: SESS Schedule amounts for Special Education vary from prior year by 40% or more. Correct the data or enter a justification.</p> <p>SESS Schedule 2350: \$5,850.45 Prior Year SESS Schedule 2350: \$10,965.32</p>	Increased legal activity due to teacher contract negotiations.

Amounts Expressed in Whole Dollars

	<u>General Fund</u> <u>(10)</u>	<u>Student Sponsored</u> <u>Activity Fund</u> <u>(21)</u>	<u>Public Purpose Trust</u> <u>(27)</u>	<u>Other Compt Approved</u> <u>(28)</u>	<u>Athletic / Activity</u> <u>(29)</u>
<b>Assets And Deferred Outflows Of Resources</b>					
<b>Assets</b>					
0100 Cash and Cash Equivalents	9,462,523				
0110 Investments					
0120 Taxes Receivable	1,333,825				
0130 Due From Other Funds	152,941				
0141 Due From Other Governments	50,012				
0142 State Revenue Receivable	854,632				
0143 Federal Revenue Receivable	269,298				
0145 Other Intergovernmental Revenue Receivable					
0146 Due from Primary Government					
0147 Due from Component Unit					
0150 Other Receivables	26,068				
0170 Inventories					
0180 Prepaid Expenses (Expenditures)	272,739				
0190 Other Current Assets					
<b>Total Assets</b>	<b>\$12,422,038</b>				
0910 Deferred Outflows of Resources					
<b>Total Assets And Deferred Outflows Of Resources</b>	<b>\$12,422,038</b>				

Amounts Expressed in Whole Dollars

Capital Reserve (690.1850)    Capital Reserve (1431)(32)    Other Capital Projects Fund (39)    Debt Service (40)    Permanent (90)

**Assets And Deferred Outflows Of Resources**

**Assets**

0100 Cash and Cash Equivalents	200,021
0110 Investments	2,627,547
0120 Taxes Receivable	
0130 Due From Other Funds	1,301,000
0141 Due From Other Governments	
0142 State Revenue Receivable	
0143 Federal Revenue Receivable	
0145 Other Intergovernmental Revenue Receivable	
0146 Due from Primary Government	
0147 Due from Component Unit	
0150 Other Receivables	280,500
0170 Inventories	
0180 Prepaid Expenses (Expenditures)	
0190 Other Current Assets	

**Total Assets** **\$4,409,068**

0910 Deferred Outflows of Resources

**Total Assets And Deferred Outflows Of Resources** **\$4,409,068**



Amounts Expressed in Whole Dollars

**Total Governmental Funds**

**Assets And Deferred Outflows Of Resources**

<b>Assets</b>	
0100 Cash and Cash Equivalents	9,662,544
0110 Investments	2,627,547
0120 Taxes Receivable	1,333,825
0130 Due From Other Funds	1,453,941
0141 Due From Other Governments	50,012
0142 State Revenue Receivable	854,632
0143 Federal Revenue Receivable	269,298
0145 Other Intergovernmental Revenue Receivable	
0146 Due from Primary Government	
0147 Due from Component Unit	
0150 Other Receivables	306,568
0170 Inventories	
0180 Prepaid Expenses (Expenditures)	272,739
0190 Other Current Assets	
<b>Total Assets</b>	<b>\$16,831,106</b>
0910 Deferred Outflows of Resources	
<b>Total Assets And Deferred Outflows Of Resources</b>	<b>\$16,831,106</b>

Amounts Expressed in Whole Dollars

<u>General Fund</u> <u>(10)</u>	<u>Student Sponsored</u> <u>Activity Fund</u> <u>(21)</u>	<u>Public Purpose Trust</u> <u>(27)</u>	<u>Other Compt Approved</u> <u>(28)</u>	<u>Athletic / Activity</u> <u>(29)</u>
------------------------------------	---	--	--	---

**Liabilities And Deferred Inflows Of Resources And Fund Balances**

**Liabilities**

0400 Due to Other Funds	1,301,000
0411 Due to Other Governments	
0412 Due to Primary Government	
0413 Due to Component Unit	
0420 Accounts Payable	373,390
0430 Contracts Payable	
0440 Current Portion of Long-Term Debt	
0450 Short-Term Payables	
0461 Accrued Salaries and Benefits	2,592,613
0462 Payroll Deductions and Withholding	76,654
0480 Unearned Revenues	9,473
0490 Other Current Liabilities	5,849

**Total Liabilities** **\$4,358,979**

0950 Deferred Inflows of Resources	930,474
------------------------------------	---------

**Fund Balances**

0810 Nonspendable Fund Balance	272,739
0820 Restricted Fund Balance	
0830 Committed Fund Balance	4,739,973
0840 Assigned Fund Balance	
0850 Unassigned Fund Balance	2,119,873

**Total Fund Balances** **\$7,132,585**

**Total Liabilities, Deferred Inflows Of Resources And Fund Balances** **\$12,422,038**

Amounts Expressed in Whole Dollars

<u>Capital Reserve (690.</u>	<u>Capital Reserve (1431)</u>	<u>Other Capital Projects</u>	<u>Debt Service</u>	<u>Permanent</u>
<u>1850)</u>	<u>(32)</u>	<u>Fund</u>	<u>(40)</u>	<u>(90)</u>
<u>(31)</u>		<u>(39)</u>		

**Liabilities And Deferred Inflows Of Resources And Fund Balances**

**Liabilities**

0400 Due to Other Funds				
0411 Due to Other Governments				
0412 Due to Primary Government				
0413 Due to Component Unit				
0420 Accounts Payable			73,759	
0430 Contracts Payable				
0440 Current Portion of Long-Term Debt				
0450 Short-Term Payables				
0461 Accrued Salaries and Benefits				
0462 Payroll Deductions and Withholding				
0480 Unearned Revenues			306,000	
0490 Other Current Liabilities				

<b>Total Liabilities</b>				<b>\$379,759</b>
--------------------------	--	--	--	------------------

0950 Deferred Inflows of Resources

**Fund Balances**

0810 Nonspendable Fund Balance				
0820 Restricted Fund Balance				
0830 Committed Fund Balance			4,029,309	
0840 Assigned Fund Balance				
0850 Unassigned Fund Balance				

<b>Total Fund Balances</b>				<b>\$4,029,309</b>
----------------------------	--	--	--	--------------------

<b>Total Liabilities, Deferred Inflows Of Resources And Fund Balances</b>				<b>\$4,409,068</b>
---	--	--	--	--------------------

Amounts Expressed in Whole Dollars

**Total Governmental Funds**

**Liabilities And Deferred Inflows Of Resources And Fund Balances**

**Liabilities**

0400 Due to Other Funds	1,301,000
0411 Due to Other Governments	
0412 Due to Primary Government	
0413 Due to Component Unit	
0420 Accounts Payable	447,149
0430 Contracts Payable	
0440 Current Portion of Long-Term Debt	
0450 Short-Term Payables	
0461 Accrued Salaries and Benefits	2,592,613
0462 Payroll Deductions and Withholding	76,654
0480 Unearned Revenues	315,473
0490 Other Current Liabilities	5,849

**Total Liabilities \$4,738,738**

0950 Deferred Inflows of Resources	930,474
------------------------------------	---------

**Fund Balances**

0810 Nonspendable Fund Balance	272,739
0820 Restricted Fund Balance	
0830 Committed Fund Balance	8,769,282
0840 Assigned Fund Balance	
0850 Unassigned Fund Balance	2,119,873

**Total Fund Balances \$11,161,894**

**Total Liabilities, Deferred Inflows Of Resources And Fund Balances \$16,831,106**

Amounts Expressed in Whole Dollars	<u>General Fund</u> <u>(10)</u>	<u>Student Sponsored</u> <u>Activity Fund</u> <u>(21)</u>	<u>Public Purpose Trust</u> <u>(27)</u>	<u>Other Compt Approved</u> <u>(28)</u>	<u>Athletic / Activity</u> <u>(29)</u>
<b>Revenues</b>					
6000 Revenue from Local Sources	10,885,179				
7000 Revenue from State Sources	12,805,538				
8000 Revenue from Federal Sources	898,405				
<b>Total Revenues</b>	<b>\$24,589,122</b>				
<b>Expenditures</b>					
1000 Instruction	15,420,869				
2000 Support Services	6,792,314				
3000 Operation of Non-Instructional Services	544,892				
4000 Facilities Acquisition, Construction and Improvement Services	60,242				
5110 Debt Service	727,548				
5130 Refund of Prior Year Revenues / Receipts	10,054				
<b>Total Expenditures</b>	<b>\$23,555,919</b>				
<b>Excess (Deficiency) Of Revenues Over Expenditures</b>	<b>\$1,033,203</b>				
<b>Other Financing Sources (Uses)</b>					
9110 Face Value of Bonds Issued					
9120 Proceeds from Refunding of Bonds					
9130 Bond Premiums					
9200 Proceeds from Extended-Term Financing					
9300 Interfund Transfers - IN					
9400 Sale of or Compensation for Loss of Fixed Assets	818				
9710 Transfers from Component Units					
9720 Transfers from Primary Governments					
9910 Other Financing Sources Not Listed in the 9000 Series					
9990 Insurance Recoveries					
5120 Debt Service – Refunded Bonds					
5150 Bond Discounts					
5200 Interfund Transfers – Out	750,000				
5300 Transfers Out to Component Units/Primary Governments					
<b>Total Other Financing Sources (Uses)</b>	<b>(\$749,182)</b>				

Amounts Expressed in Whole Dollars	<u>Capital Reserve (690.1850)</u> <u>(31)</u>	<u>Capital Reserve (1431)</u> <u>(32)</u>	<u>Other Capital Projects</u> <u>Fund</u> <u>(39)</u>	<u>Debt Service</u> <u>(40)</u>	<u>Permanent</u> <u>(90)</u>
<b>Revenues</b>					
6000 Revenue from Local Sources			102,447		
7000 Revenue from State Sources					
8000 Revenue from Federal Sources					
<b>Total Revenues</b>			<b>\$102,447</b>		
<b>Expenditures</b>					
1000 Instruction					
2000 Support Services					
3000 Operation of Non-Instructional Services					
4000 Facilities Acquisition, Construction and Improvement Services			42,238		
5110 Debt Service					
5130 Refund of Prior Year Revenues / Receipts					
<b>Total Expenditures</b>			<b>\$42,238</b>		
<b>Excess (Deficiency) Of Revenues Over Expenditures</b>			<b>\$60,209</b>		
<b>Other Financing Sources (Uses)</b>					
9110 Face Value of Bonds Issued					
9120 Proceeds from Refunding of Bonds					
9130 Bond Premiums					
9200 Proceeds from Extended-Term Financing					
9300 Interfund Transfers - IN			750,000		
9400 Sale of or Compensation for Loss of Fixed Assets			25,500		
9710 Transfers from Component Units					
9720 Transfers from Primary Governments					
9910 Other Financing Sources Not Listed in the 9000 Series					
9990 Insurance Recoveries					
5120 Debt Service – Refunded Bonds					
5150 Bond Discounts					
5200 Interfund Transfers – Out					
5300 Transfers Out to Component Units/Primary Governments					
<b>Total Other Financing Sources (Uses)</b>			<b>\$775,500</b>		

Amounts Expressed in Whole Dollars	<u>Total Governmental Funds</u>
<b>Revenues</b>	
6000 Revenue from Local Sources	10,987,626
7000 Revenue from State Sources	12,805,538
8000 Revenue from Federal Sources	898,405
<b>Total Revenues</b>	<b>\$24,691,569</b>
<b>Expenditures</b>	
1000 Instruction	15,420,869
2000 Support Services	6,792,314
3000 Operation of Non-Instructional Services	544,892
4000 Facilities Acquisition, Construction and Improvement Services	102,480
5110 Debt Service	727,548
5130 Refund of Prior Year Revenues / Receipts	10,054
<b>Total Expenditures</b>	<b>\$23,598,157</b>
<b>Excess (Deficiency) Of Revenues Over Expenditures</b>	<b>\$1,093,412</b>
<b>Other Financing Sources (Uses)</b>	
9110 Face Value of Bonds Issued	
9120 Proceeds from Refunding of Bonds	
9130 Bond Premiums	
9200 Proceeds from Extended-Term Financing	
9300 Interfund Transfers - IN	750,000
9400 Sale of or Compensation for Loss of Fixed Assets	26,318
9710 Transfers from Component Units	
9720 Transfers from Primary Governments	
9910 Other Financing Sources Not Listed in the 9000 Series	
9990 Insurance Recoveries	
5120 Debt Service – Refunded Bonds	
5150 Bond Discounts	
5200 Interfund Transfers – Out	750,000
5300 Transfers Out to Component Units/Primary Governments	
<b>Total Other Financing Sources (Uses)</b>	<b>\$26,318</b>

Amounts Expressed in Whole Dollars	<u>General Fund</u> <u>(10)</u>	<u>Student Sponsored</u> <u>Activity Fund</u> <u>(21)</u>	<u>Public Purpose Trust</u> <u>(27)</u>	<u>Other Compt Approved</u> <u>(28)</u>	<u>Athletic / Activity</u> <u>(29)</u>
<b>Special And Extraordinary Items</b>					
9920 Special Items – Gains					
9930 Extraordinary Items – Gains					
5520 Special Items – Losses					
5530 Extraordinary Items – Losses					
<b>Net Change In Fund Balances</b>	<b>\$284,021</b>				
<b>Fund Balance</b>					
0001 Fund Balance - Beginning of Fiscal Year	6,848,564				
<b>Fund Balance - End Of Year</b>	<b>\$7,132,585</b>				



Amounts Expressed in Whole Dollars	<u>Capital Reserve (690.</u> <u>1850)</u> <u>(31)</u>	<u>Capital Reserve (1431)</u> <u>(32)</u>	<u>Other Capital Projects</u> <u>Fund</u> <u>(39)</u>	<u>Debt Service</u> <u>(40)</u>	<u>Permanent</u> <u>(90)</u>
<b>Special And Extraordinary Items</b>					
9920 Special Items – Gains					
9930 Extraordinary Items – Gains					
5520 Special Items – Losses					
5530 Extraordinary Items – Losses					
<b>Net Change In Fund Balances</b>			<b>\$835,709</b>		
<b>Fund Balance</b>					
0001 Fund Balance - Beginning of Fiscal Year			3,193,600		
<b>Fund Balance - End Of Year</b>			<b>\$4,029,309</b>		

Amounts Expressed in Whole Dollars	<u>Total Governmental Funds</u>
<b>Special And Extraordinary Items</b>	
9920 Special Items – Gains	
9930 Extraordinary Items – Gains	
5520 Special Items – Losses	
5530 Extraordinary Items – Losses	
<b>Net Change In Fund Balances</b>	<b>\$1,119,730</b>
<b>Fund Balance</b>	
0001 Fund Balance - Beginning of Fiscal Year	10,042,164
<b>Fund Balance - End Of Year</b>	<b>\$11,161,894</b>

Amounts Expressed in Whole Dollars	<u>Food Service</u> <u>(51)</u>	<u>Child Care</u> <u>Operations</u> <u>(52)</u>	<u>Other Enterprise</u> <u>(58)</u>	<u>TOTAL</u>	<u>Internal Service</u> <u>(60)</u>
<b>Assets And Deferred Outflows Of Resources</b>					
<b>Current Assets</b>					
0100 Cash and Cash Equivalents	341,300			341,300	
0110 Investments					
0130 Due From Other Funds					
0141 Due From Other Governments					
0142 State Revenue Receivable	4,734			4,734	
0143 Federal Revenue Receivable	121,547			121,547	
0146 Due from Primary Government					
0147 Due from Component Unit					
0150 Other Receivables	28,857			28,857	
0170 Inventories	46,687			46,687	
0180 Prepaid Expenses (Expenditures)	400			400	
0190 Other Current Assets					
<b>Total Current Assets</b>	<b>\$543,525</b>			<b>\$543,525</b>	
<b>Noncurrent Assets</b>					
0211 Land					
0212 Site Improvements (Net)					
0220 Buildings and Building Improvements (Net)					
0230 Machinery, Equipment and Furniture (Net)	68,707			68,707	
0250 Construction in Progress					
0260 Long Term Prepayments					
0290 Other Noncurrent Assets					
<b>Total Noncurrent Assets</b>	<b>\$68,707</b>			<b>\$68,707</b>	
0910 Deferred Outflows of Resources	150,755			150,755	
<b>Total Assets And Deferred Outflows Of Resources</b>	<b>\$762,987</b>			<b>\$762,987</b>	

Amounts Expressed in Whole Dollars	<u>Food Service</u> <u>(51)</u>	<u>Child Care</u> <u>Operations</u> <u>(52)</u>	<u>Other Enterprise</u> <u>(58)</u>	<u>TOTAL</u>	<u>Internal Service</u> <u>(60)</u>
<b>Liabilities And Deferred Inflows Of Resources And Net Position</b>					
<b>Current Liabilities</b>					
0400 Due to Other Funds	142,941			142,941	
0411 Due to Other Governments					
0413 Due to Component Unit					
0420 Accounts Payable	11,462			11,462	
0430 Contracts Payable					
0440 Current Portion of Long-Term Debt					
0450 Short-Term Payables					
0461 Accrued Salaries and Benefits					
0462 Payroll Deductions and Withholding					
0480 Unearned Revenues	33,560			33,560	
0490 Other Current Liabilities	14,447			14,447	
<b>Total Current Liabilities</b>	<b>\$202,410</b>			<b>\$202,410</b>	
<b>Noncurrent Liabilities</b>					
0510 Bonds Payable					
0520 Extended-Term Financing Agreements Payable					
0530 Lease-Purchase Obligations					
0540 Accumulated Compensated Absences					
0550 Authority Lease Obligations					
0560 Other Post-Employment Benefits (OPEB)	44,295			44,295	
0570 Net Pension Liability	1,009,643			1,009,643	
0599 Other Noncurrent Liabilities	16,663			16,663	
<b>Total Noncurrent Liabilities</b>	<b>\$1,070,601</b>			<b>\$1,070,601</b>	
<b>Total Liabilities</b>	<b>\$1,273,011</b>			<b>\$1,273,011</b>	
0950 Deferred Inflows of Resources	66,734			66,734	
<b>Net Position</b>					
0791 Net Investment in Capital Assets	68,707			68,707	
0008 Restricted Net Position (0792 – 0798)					
0799 Unrestricted Net Position	(645,465)			(645,465)	
<b>Total Net Position</b>	<b>(\$576,758)</b>			<b>(\$576,758)</b>	
<b>Total Liabilities And Deferred Inflows Of Resources And Net Position</b>	<b>\$762,987</b>			<b>\$762,987</b>	

Amounts Expressed in Whole Dollars	<u>Food Service</u> <u>(51)</u>	<u>Child Care Operations</u> <u>(52)</u>	<u>Other Enterprise</u> <u>(58)</u>	<u>TOTAL</u>	<u>Internal Service</u> <u>(60)</u>
<b>Operating Revenues</b>					
6600 Food Service Revenue	16,195			16,195	
0071 Charges for Services					
0072 Other Operating Revenue					
<b>Total Operating Revenues</b>	<b>\$16,195</b>			<b>\$16,195</b>	
<b>Operating Expenses</b>					
100 Personnel Services – Salaries	244,821			244,821	
200 Personnel Services – Employee Benefits	244,396			244,396	
300 Purchased Professional and Technical Services	33			33	
400 Purchased Property Services	3,352			3,352	
500 Other Purchased Services					
600 Supplies	250,326			250,326	
740 Depreciation	21,708			21,708	
810 Dues and Fees	3,535			3,535	
880 Refunds of Prior Years' Receipts					
890 Miscellaneous Expenditures					
<b>Total Operating Expenses</b>	<b>\$768,171</b>			<b>\$768,171</b>	
<b>Operating Income (Loss)</b>	<b>(\$751,976)</b>			<b>(\$751,976)</b>	
<b>Non Operating Revenues (Expenses)</b>					
6500 Earnings on Investments	591			591	
6920 Contributions and Donations from Private Sources					
6930 Gains or Losses on Sale of Fixed Assets					
6991 Refunds of a Prior Year Expenditure					
7000 Revenue from State Sources	79,760			79,760	
8000 Revenue from Federal Sources	581,179			581,179	
9990 Insurance Recoveries					
820 Claims and Judgments Against the LEA					
830 Interest					
<b>TOTAL Non Operating Revenues (Expenses)</b>	<b>\$661,530</b>			<b>\$661,530</b>	
<b>Income (Loss) Before Contributions And Transfers</b>	<b>(\$90,446)</b>			<b>(\$90,446)</b>	

Amounts Expressed in Whole Dollars	<u>Food Service</u> <u>(51)</u>	<u>Child Care Operations</u> <u>(52)</u>	<u>Other Enterprise</u> <u>(58)</u>	<u>TOTAL</u>	<u>Internal Service</u> <u>(60)</u>
<b>Contributions, Transfers, and Special and Extraordinary Items</b>					
5200 Interfund Transfers – Out					
5300 Transfers Out to Component Units/Primary Governments					
5520 Special Items – Losses					
5530 Extraordinary Items – Losses					
9300 Interfund Transfers - IN					
9500 Capital Contributions					
9700 Transfers IN From Component Units/Primary Governments					
9920 Special Items – Gains					
9930 Extraordinary Items – Gains					
<b>Change In Net Position</b>	<b>(\$90,446)</b>			<b>(\$90,446)</b>	
0002 Net Position - Beginning of Fiscal Year	(486,312)			(486,312)	
0003 Accounting Changes / Residual Equity Transfers					
<b>Net Position - End Of Year</b>	<b>(\$576,758)</b>			<b>(\$576,758)</b>	

Amounts Expressed in Whole Dollars	<u>Food Service</u> <u>(51)</u>	<u>Child Care Operations</u> <u>(52)</u>	<u>Other Enterprise</u> <u>(58)</u>	<u>TOTAL</u>	<u>Internal Service(60)</u>
<b>Cash Flows From Operating Activities</b>					
0011 Cash Receipts From Users	25,260			25,260	
0012 Cash Receipts From Assessments Made to Other Funds					
0013 Cash Receipts From Earnings on Investments					
0014 Cash Receipts From Other Operating Revenue					
0015 Cash Payments To Employees For Services	414,636			414,636	
0016 Cash Payments For Insurance Claims					
0017 Cash Payments To Suppliers For Goods and Services	197,480			197,480	
0018 Cash Payments For Other Operating Expenses	3,535			3,535	
<b>Net Cash Provided By (Used For) Operating Activities</b>	<b>(\$590,391)</b>			<b>(\$590,391)</b>	
<b>Cash Flows From Non-Capital Financing Activities</b>					
0021 Receipts From Local Sources - 6000					
0022 Receipts From State Sources - 7000	75,464			75,464	
0023 Receipts From Federal Sources -8000	421,368			421,368	
0024 Notes and Loans Received (Repaid)					
0025 Interest Paid on Notes/Loans - 5100-830					
0026 Operating Transfers In (Out)/Residual Equity Trans					
0027 Operating Transfers In (Out) Primary Government / Comp Unit	89,037			89,037	
0028 Receipts From Refund of Prior Year Expenditures - 6991					
0029 Special and Extraordinary Gains (losses)					
0030 Receipts from Insurance Recoveries -9990					
<b>Net Cash Prov By (Used for) Non-Capital Financing Activities</b>	<b>\$585,869</b>			<b>\$585,869</b>	
<b>Cash Flows From Capital and Related Financing Activities</b>					
0031 Payments For Fac Acq, Const, and Imp - 4000					
0032 Gain / (Loss) on Sale of Fixed Assets - 6930					
0033 Proceeds From Extended Term Financing - 9200					
0034 Principal Paid on Financing Agreements					
0035 Interest Paid on Financing Agreements - 5100-830					
0036 (Inc) Dec in Contributed Capital					
<b>Net Cash Prov By (Used for) Capital and Related Financing Activities</b>					
<b>Cash Flows From Investing Activities</b>					
0041 Earnings on Investments - 6500	591			591	
0042 Purchase of Inv Securities / Deposits to Inv Pools					
0043 Receipts From Investment Pool Withdrawals					
0044 Proceeds from Sale and Maturity of Inv Securities					

LEA : 127042853 Freedom Area SD

Printed 1/19/2022 1:39:31 PM

0045 Loans Received (Paid)

<b>Net Cash Prov By (Used for) Investing Activities</b>	<b>\$591</b>	<b>\$591</b>
---	--------------	--------------



	<u>Food Service</u> <u>(51)</u>	<u>Child Care Operations</u> <u>(52)</u>	<u>Other Enterprise</u> <u>(58)</u>	<u>TOTAL</u>	<u>Internal Service</u> <u>(60)</u>
<b>Net Increase (Decrease) in Cash Flows</b>	<b>(3,931)</b>			<b>(3,931)</b>	
0004 Cash and Cash Equivalents Beginning of Year	345,231			345,231	
<b>Cash and Cash Equivalents at Year End</b>	<b>\$341,300</b>			<b>\$341,300</b>	
<hr/>					
<b>Reconciliation of Operating Income (Loss) To Net Cash Provided by (Used For) Operating Activities</b>					
0005 Operating Income (Loss) per REP	(751,976)			(751,976)	
<b>Adjustments</b>					
0051 Depreciation and Net Amortization	21,708			21,708	
0052 Provision for Uncollectible Accounts					
0053 Other Adjustments	133,943			133,943	
<b>Effect of Changes in Assets, Liabilities, Deferred Outflows and Deferred Inflows</b>					
0054 (Inc) Dec In Accounts Receivable (0120-0150)	(946)			(946)	
0055 Advances to Other Funds (0160)					
0056 (Inc) Dec in Inventories (0170)	(1,012)			(1,012)	
0057 (Inc) Dec in Prepaid Expenses (0180)					
0058 (Inc) Dec in Other Current or Noncurrent Assets					
0064 Deferred Outflows (0910)					
0059 Inc (Dec) in Accounts Payable (0400-0450)	7,681			7,681	
0060 Inc (Dec) in Accrued Salaries/Benefits (0461)	(9,800)			(9,800)	
0065 Inc (Dec) in Net Pension Liabilities (0570)					
0066 Inc (Dec) in Other Postemp Benefit Oblig (0560)					
0061 Inc (Dec) in Payroll Deductions/Withholding (0462)					
0062 Inc (Dec) in Unearned Revenue (0480)	10,984			10,984	
0063 Inc (Dec) in Other Current or Noncurrent Liabilities	(973)			(973)	
0067 Deferred Inflows (0950)					
<b>Total Adjustments</b>	<b>\$161,585</b>			<b>\$161,585</b>	
<b>Cash Provided By (Used for) Total</b>	<b>(\$590,391)</b>			<b>(\$590,391)</b>	

**COMBINED STATEMENT OF CASH FLOWS**  
**SCHEDULE OF NONCASH INVESTING, CAPITAL, AND FINANCING ACTIVITIES**

Explanation of Transaction and Balance Sheet Effect	Amount
USDA Donated Commodities	60,545
<b>Total</b>	<b>\$60,545</b>

LEA : 127042853 Freedom Area SD

Printed 1/19/2022 1:39:33 PM

Amounts Expressed in Whole Dollars

	<u>Private Purpose Trust</u> <u>(71)</u>	<u>Investment Trust</u> <u>(72)</u>	<u>Pension Trust</u> <u>(73)</u>	<u>Student Activity Custodial</u> <u>(81)</u>
<b>Assets And Deferred Outflows Of Resources</b>				
<b>Assets</b>				
0100 Cash and Cash Equivalents	7,064			55,062
0110 Investments	189,687			
0130 Due From Other Funds				
0140 Due from Other Governments, Primary Government and Component Units				
0150 Other Receivables				
0170 Inventories				
0180 Prepaid Expenses (Expenditures)				
0190 Other Current Assets				
0220 Buildings and Building Improvements (Net)				
0230 Machinery, Equipment and Furniture (Net)				
<b>Total Assets</b>	<b>\$196,751</b>			<b>\$55,062</b>
0910 Deferred Outflows of Resources				
<b>Total Assets And Deferred Outflows Of Resources</b>	<b>\$196,751</b>			<b>\$55,062</b>

LEA : 127042853 Freedom Area SD

Printed 1/19/2022 1:39:33 PM

Amounts Expressed in Whole Dollars

Other Custodial      Fiduciary Component Units      Total Fiduciary Funds  
(89)                                      (98)

**Assets And Deferred Outflows Of Resources**

**Assets**

0100 Cash and Cash Equivalents			62,126
0110 Investments			189,687
0130 Due From Other Funds			
0140 Due from Other Governments, Primary Government and Component Units			
0150 Other Receivables			
0170 Inventories			
0180 Prepaid Expenses (Expenditures)			
0190 Other Current Assets			
0220 Buildings and Building Improvements (Net)			
0230 Machinery, Equipment and Furniture (Net)			

**Total Assets** **\$251,813**

0910 Deferred Outflows of Resources

**Total Assets And Deferred Outflows Of Resources** **\$251,813**

LEA : 127042853 Freedom Area SD

Printed 1/19/2022 1:39:33 PM

Amounts Expressed in Whole Dollars

Private Purpose Trust  
(71)

Investment Trust  
(72)

Pension Trust  
(73)

Student Activity Custodial  
(81)

**Liabilities, Deferred Inflows Of Resources And Net Position**

**Liabilities**

0400 Due to Other Funds	10,000		
0410 Due to Other Governments, Primary Government and Component Units			
0420 Accounts Payable			
0430 Contracts Payable			
0450 Short-Term Payables			
0460 Payroll Accruals and Withholdings			
0480 Unearned Revenues			
0490 Other Current Liabilities			

<b>Total Liabilities</b>	<b>\$10,000</b>		
--------------------------	-----------------	--	--

0950 Deferred Inflows of Resources

**Net Position**

0791 Net Investment in Capital Assets			
0009 Restricted Net Position (0792 – 0798)	186,751		55,062
0799 Unrestricted Net Position			

<b>Total Net Position</b>	<b>\$186,751</b>		<b>\$55,062</b>
---------------------------	------------------	--	-----------------

<b>Total Liabilities, Deferred Inflows Of Resources And Net Position</b>	<b>\$196,751</b>		<b>\$55,062</b>
--	------------------	--	-----------------

LEA : 127042853 Freedom Area SD

Printed 1/19/2022 1:39:33 PM

Amounts Expressed in Whole Dollars	<u>Other Custodial</u> <u>(89)</u>	<u>Fiduciary Component Units</u> <u>(98)</u>	<u>Total Fiduciary Funds</u>
<b>Liabilities, Deferred Inflows Of Resources And Net Position</b>			
<b>Liabilities</b>			
0400 Due to Other Funds			10,000
0410 Due to Other Governments, Primary Government and Component Units			
0420 Accounts Payable			
0430 Contracts Payable			
0450 Short-Term Payables			
0460 Payroll Accruals and Withholdings			
0480 Unearned Revenues			
0490 Other Current Liabilities			
<b>Total Liabilities</b>			<b>\$10,000</b>
0950 Deferred Inflows of Resources			
<b>Net Position</b>			
0791 Net Investment in Capital Assets			
0009 Restricted Net Position (0792 – 0798)			241,813
0799 Unrestricted Net Position			
<b>Total Net Position</b>			<b>\$241,813</b>
<b>Total Liabilities, Deferred Inflows Of Resources And Net Position</b>			<b>\$251,813</b>

Amounts Expressed in Whole Dollars	<u>Private Purpose Trust</u> (71)	<u>Investment Trust</u> (72)	<u>Pension Trust</u> (73)	<u>Student Activity</u> <u>Custodial</u> (81)	<u>Other Custodial</u> (89)	<u>Fiduciary Component</u> <u>Units</u> (98)
<b>Additions</b>						
0091 Gifts and Contributions						
0095 Net Investment Earnings	4,633			115		
0092 Other Additions				56,932		
<b>Deductions</b>						
0093 Scholarships Awarded	20,000					
0094 Other Deductions				59,986		
<b>Change In Net Position</b>	<b>(\$15,367)</b>			<b>(\$2,939)</b>		
0006 Net Position – Beginning of Fiscal Year	202,118			58,001		
0007 Net Position Held in Trust for Pension Benefits						
<b>Net Position - End of Fiscal Year</b>	<b>\$186,751</b>			<b>\$55,062</b>		

Amounts Expressed in Whole Dollars	<u>Total Fiduciary Funds</u>
<b>Additions</b>	
0091 Gifts and Contributions	
0095 Net Investment Earnings	4,748
0092 Other Additions	56,932
<b>Deductions</b>	
0093 Scholarships Awarded	20,000
0094 Other Deductions	59,986
<b>Change In Net Position</b>	<b>(\$18,306)</b>
0006 Net Position – Beginning of Fiscal Year	260,119
0007 Net Position Held in Trust for Pension Benefits	
<b>Net Position - End of Fiscal Year</b>	<b>\$241,813</b>



	<u>Revenue Reported In Current Year</u>	<u>Current Year Tax Accrual</u>	<u>Prior Year Tax Accrual</u>	<u>Taxes Collected In Current Year</u>
<b><u>Revenue from Local Sources</u></b>				
6111 Current Real Estate Taxes	8,549,579.64			8,549,579.64
6112 Interim Real Estate Taxes	2,284.88			2,284.88
6113 Public Utility Realty Taxes	9,120.13			9,120.13
6114 Payments in Lieu of Current Taxes - State / Local	2,718.04			2,718.04
6143 Current Act 511 Local Services Taxes	11,159.25			11,159.25
6151 Current Act 511 Earned Income Taxes	1,153,546.48			1,153,546.48
6153 Current Act 511 Real Estate Transfer Taxes	138,060.90			138,060.90
6411 Delinquent Real Estate Taxes	589,413.56			589,413.56
6420 Delinquent Per Capita Taxes, Section 679	1,201.25			1,201.25
6451 Delinquent Act 511 Earned Income Taxes	277.32			277.32
6500 Earnings on Investments	17,270.58			
6700 Revenues from LEA Activities	58,984.47			
6831 Federal Revenue Received from Other Pennsylvania Public LEAs	6,691.81			
6832 Federal IDEA Revenue Received as Pass Through	214,152.66			
6910 Rentals	24,922.73			
6920 Contributions and Donations from Private Sources	14,013.37			
6941 Regular Day School Tuition	12,189.50			
6991 Refunds of a Prior Year Expenditure	48,639.59			
6999 Other Revenues Not Specified Above	30,953.00			
<b>TOTAL Revenue from Local Sources</b>	<b>\$10,885,179.16</b>			<b>\$10,457,361.45</b>

**Revenue Reported  
In Current Year**

**Revenue from State Sources**

7111 Basic Education Funding-Formula	8,095,735.19		
7112 Basic Education Funding-Social Security	375,635.00		
7160 Tuition for Orphans Subsidy	9,173.47		
7271 Special Education funds for School-Aged Pupils	1,087,336.03		
7311 Pupil Transportation Subsidy	656,161.13		
7312 Nonpublic and Charter School Pupil Transportation Subsidy	23,485.00		
7330 Health Services (Medical, Dental, Nurse, Act 25)	23,529.54		
7340 State Property Tax Reduction Allocation	500,505.73		
7505 Ready to Learn Block Grant	268,806.00		
7820 State Share of Retirement Contributions	1,765,170.78		
<b>TOTAL Revenue from State Sources</b>	<b>\$12,805,537.87</b>		

**Revenue Reported  
In Current Year**

**Revenue from Federal Sources**

8514 NCLB, Title I - Improving the Academic Achievement of the Disadvantaged	300,484.00			
8515 NCLB, Title II - Preparing, Training and Recruiting High Quality Teachers and Principals	51,672.93			
8517 NCLB, Title IV - 21St Century Schools	22,804.00			
8741 Elementary and Secondary School Emergency Relief Fund (ESSER)	285,067.00			
8742 Governor's Emergency Education Relief Fund (GEER)	57,023.00			
8743 ESSER II - Elementary and Secondary School Emergency Relief Fund	32,800.00			
8749 Other CARES Act Funding	141,551.50			
8820 Medical Assistance Reimbursement for Administrative Claiming (Quarterly) Program	7,002.58			
<b>TOTAL Revenue from Federal Sources</b>	<b>\$898,405.01</b>			

**Revenue Reported  
In Current Year**

**Other Financing Sources**

9400 Sale of or Compensation for Loss of Fixed Assets	818.00	
<b>TOTAL Other Financing Sources</b>	<b>\$818.00</b>	
<b>TOTAL FROM ALL SOURCES</b>	<b>\$24,589,940.04</b>	<b>\$10,457,361.45</b>

LEA : 127042853 Freedom Area SD

Printed 1/19/2022 1:39:48 PM

	<u>General Fund (10)</u>	<u>Student Sponsored Activity Fund (21)</u>	<u>Public Purpose Trust (27)</u>	<u>Other Compt Approved (28)</u>	<u>Athletic / Activity (29)</u>	<u>Capital Reserve (690, 1850) (31)</u>
<b>6000 Revenue from Local Sources</b>						
6111 Current Real Estate Taxes	8,549,579.64					
6112 Interim Real Estate Taxes	2,284.88					
6113 Public Utility Realty Taxes	9,120.13					
6114 Payments in Lieu of Current Taxes - State / Local	2,718.04					
6143 Current Act 511 Local Services Taxes	11,159.25					
6151 Current Act 511 Earned Income Taxes	1,153,546.48					
6153 Current Act 511 Real Estate Transfer Taxes	138,060.90					
6411 Delinquent Real Estate Taxes	589,413.56					
6420 Delinquent Per Capita Taxes, Section 679	1,201.25					
6451 Delinquent Act 511 Earned Income Taxes	277.32					
6500 Earnings on Investments	17,270.58					
6700 Revenues from LEA Activities	58,984.47					
6831 Federal Revenue Received from Other Pennsylvania Public LEAs	6,691.81					
6832 Federal IDEA Revenue Received as Pass Through	214,152.66					
6910 Rentals	24,922.73					
6920 Contributions and Donations from Private Sources	14,013.37					
6941 Regular Day School Tuition	12,189.50					
6991 Refunds of a Prior Year Expenditure	48,639.59					
6999 Other Revenues Not Specified Above	30,953.00					
<b>6000 Total Revenue from Local Sources</b>	<b>\$10,885,179.16</b>					
<b>7000 Revenue from State Sources</b>						
7111 Basic Education Funding-Formula	8,095,735.19					
7112 Basic Education Funding-Social Security	375,635.00					
7160 Tuition for Orphans Subsidy	9,173.47					
7271 Special Education funds for School-Aged Pupils	1,087,336.03					
7311 Pupil Transportation Subsidy	656,161.13					
7312 Nonpublic and Charter School Pupil Transportation Subsidy	23,485.00					
7330 Health Services (Medical, Dental, Nurse, Act 25)	23,529.54					
7340 State Property Tax Reduction Allocation	500,505.73					
7505 Ready to Learn Block Grant	268,806.00					
7820 State Share of Retirement Contributions	1,765,170.78					
<b>7000 Total Revenue from State Sources</b>	<b>\$12,805,537.87</b>					
<b>8000 Revenue from Federal Sources</b>						
8514 NCLB, Title I - Improving the Academic Achievement of the Disadvantaged	300,484.00					

LEA : 127042853 Freedom Area SD

Printed 1/19/2022 1:39:48 PM

	<u>Capital Reserve</u> <u>(1431) (32)</u>	<u>Other Capital</u> <u>Projects Fund (39)</u>	<u>Debt Service (40)</u>	<u>Permanent (90)</u>	<u>Total</u>
<b>6000 Revenue from Local Sources</b>					
6111 Current Real Estate Taxes					8,549,579.64
6112 Interim Real Estate Taxes					2,284.88
6113 Public Utility Realty Taxes					9,120.13
6114 Payments in Lieu of Current Taxes - State / Local					2,718.04
6143 Current Act 511 Local Services Taxes					11,159.25
6151 Current Act 511 Earned Income Taxes					1,153,546.48
6153 Current Act 511 Real Estate Transfer Taxes					138,060.90
6411 Delinquent Real Estate Taxes					589,413.56
6420 Delinquent Per Capita Taxes, Section 679					1,201.25
6451 Delinquent Act 511 Earned Income Taxes					277.32
6500 Earnings on Investments		2,480.00			19,750.58
6700 Revenues from LEA Activities					58,984.47
6831 Federal Revenue Received from Other Pennsylvania Public LEAs					6,691.81
6832 Federal IDEA Revenue Received as Pass Through					214,152.66
6910 Rentals					24,922.73
6920 Contributions and Donations from Private Sources					14,013.37
6941 Regular Day School Tuition					12,189.50
6991 Refunds of a Prior Year Expenditure		99,967.00			148,606.59
6999 Other Revenues Not Specified Above					30,953.00
<b>6000 Total Revenue from Local Sources</b>		<b>\$102,447.00</b>			<b>\$10,987,626.16</b>
<b>7000 Revenue from State Sources</b>					
7111 Basic Education Funding-Formula					8,095,735.19
7112 Basic Education Funding-Social Security					375,635.00
7160 Tuition for Orphans Subsidy					9,173.47
7271 Special Education funds for School-Aged Pupils					1,087,336.03
7311 Pupil Transportation Subsidy					656,161.13
7312 Nonpublic and Charter School Pupil Transportation Subsidy					23,485.00
7330 Health Services (Medical, Dental, Nurse, Act 25)					23,529.54
7340 State Property Tax Reduction Allocation					500,505.73
7505 Ready to Learn Block Grant					268,806.00
7820 State Share of Retirement Contributions					1,765,170.78
<b>7000 Total Revenue from State Sources</b>					<b>\$12,805,537.87</b>
<b>8000 Revenue from Federal Sources</b>					
8514 NCLB, Title I - Improving the Academic Achievement of the Disadvantaged					300,484.00

	<u>General Fund (10)</u>	<u>Student Sponsored Activity Fund (21)</u>	<u>Public Purpose Trust (27)</u>	<u>Other Compt Approved (28)</u>	<u>Athletic / Activity (29)</u>	<u>Capital Reserve (690.1850) (31)</u>
<b>8000 Revenue from Federal Sources</b>						
8515 NCLB, Title II - Preparing, Training and Recruiting High Quality Teachers and Principals	51,672.93					
8517 NCLB, Title IV - 21st Century Schools	22,804.00					
8741 Elementary and Secondary School Emergency Relief Fund (ESSER)	285,067.00					
8742 Governor's Emergency Education Relief Fund (GEER)	57,023.00					
8743 ESSER II - Elementary and Secondary School Emergency Relief Fund	32,800.00					
8749 Other CARES Act Funding	141,551.50					
8820 Medical Assistance Reimbursement for Administrative Claiming (Quarterly) Program	7,002.58					
<b>8000 Total Revenue from Federal Sources</b>	<b>\$898,405.01</b>					
<b>9000 Other Financing Sources</b>						
9310 General Fund Transfers						
9400 Sale of or Compensation for Loss of Fixed Assets		818.00				
<b>9000 Total Other Financing Sources</b>		<b>\$818.00</b>				
<b>Total From All Sources</b>		<b>\$24,589,940.04</b>				

	<u>Capital Reserve</u> <u>(1431) (32)</u>	<u>Other Capital</u> <u>Projects Fund (39)</u>	<u>Debt Service (40)</u>	<u>Permanent (90)</u>	<u>Total</u>
<b>8000 Revenue from Federal Sources</b>					
8515 NCLB, Title II - Preparing, Training and Recruiting High Quality Teachers and Principals					51,672.93
8517 NCLB, Title IV - 21st Century Schools					22,804.00
8741 Elementary and Secondary School Emergency Relief Fund (ESSER)					285,067.00
8742 Governor's Emergency Education Relief Fund (GEER)					57,023.00
8743 ESSER II - Elementary and Secondary School Emergency Relief Fund					32,800.00
8749 Other CARES Act Funding					141,551.50
8820 Medical Assistance Reimbursement for Administrative Claiming (Quarterly) Program					7,002.58
<b>8000 Total Revenue from Federal Sources</b>					<b>\$898,405.01</b>
<b>9000 Other Financing Sources</b>					
9310 General Fund Transfers		750,000.00			750,000.00
9400 Sale of or Compensation for Loss of Fixed Assets		25,500.00			26,318.00
<b>9000 Total Other Financing Sources</b>		<b>\$775,500.00</b>			<b>\$776,318.00</b>
<b>Total From All Sources</b>		<b>\$877,947.00</b>			<b>\$25,467,887.04</b>



	<u>General Fund (10)</u>	<u>Student Sponsored Activity Fund (21)</u>	<u>Public Purpose Trust (27)</u>	<u>Other Compt Approved (28)</u>	<u>Athletic / Activity (29)</u>	<u>Capital Reserve (690. 1850) (31)</u>
Revenue from Local Sources	10,885,179.16					
Revenue from State Sources	12,805,537.87					
Revenue from Federal Sources	898,405.01					
Other Financing Sources	818.00					
<b>Total From All Sources</b>	<b>\$24,589,940.04</b>					

	<u>Capital Reserve (1431)</u> <u>(32)</u>	<u>Other Capital Projects</u> <u>Fund (39)</u>	<u>Debt Service (40)</u>	<u>Permanent (90)</u>	<u>Total</u>
Revenue from Local Sources		102,447.00			10,987,626.16
Revenue from State Sources					12,805,537.87
Revenue from Federal Sources					898,405.01
Other Financing Sources		775,500.00			776,318.00
<b>Total From All Sources</b>		<b>\$877,947.00</b>			<b>\$25,467,887.04</b>

LEA : 127042853 Freedom Area SD

Printed 1/19/2022 1:40:12 PM

General Fund (10)

	<u>Total</u>
<b>1000 Instruction</b>	
<b>100 Personnel Services – Salaries</b>	
100 Personnel Services – Salaries	6,113,641.20
<b>Total Personnel Services – Salaries</b>	<b>\$6,113,641.20</b>
<b>200 Personnel Services – Employee Benefits</b>	
210 Group Insurance – Contracted Provider	6,159.22
220 Social Security Contributions	461,335.03
230 PSERS Retirement Contributions	2,084,997.83
260 Workers’ Compensation	42,073.08
270 Group Insurance – Self-Insurance	1,818,952.66
292 Health Savings Accounts	153,696.70
<b>Total Personnel Services – Employee Benefits</b>	<b>\$4,567,214.52</b>
<b>300 Purchased Professional and Technical Services</b>	
322 Professional Educational Services – Ius	413,970.37
323 Professional Educational Services – Other Educational Agencies	413,901.85
330 Other Professional Services	83,731.87
340 Technical Services	5,480.00
<b>Total Purchased Professional and Technical Services</b>	<b>\$917,084.09</b>
<b>400 Purchased Property Services</b>	
430 Repairs and Maintenance Services	4,043.13
<b>Total Purchased Property Services</b>	<b>\$4,043.13</b>
<b>500 Other Purchased Services</b>	
510 Student Transportation Services	2,173.00
562 Tuition To Pennsylvania Charter Schools	1,175,421.48
563 Tuition To Nonpublic Schools	848,639.07
564 Tuition To Career and Technology Centers	425,343.98
567 Tuition To Approved Private Schools (APS) and PA Chartered Schools for the Deaf and Blind	262,733.43
568 Tuition To Private Residential Rehabilitative Institutions (PRRI) [In-State] and Detention Centers	39,144.81
594 IU Payment By Withholding for Institutionalized Children’s Programs – Special Classes	824.51
<b>Total Other Purchased Services</b>	<b>\$2,754,280.28</b>
<b>600 Supplies</b>	
610 General Supplies	434,883.60
640 Books and Periodicals	212,480.01
650 Supplies & Fees – Technology Related	20,378.50
<b>Total Supplies</b>	<b>\$667,742.11</b>
<b>700 Property</b>	
758 Capitalized Technology Software - Original	94,115.38
768 Capitalized Technology Software - Replacement	302,115.92
<b>Total Property</b>	<b>\$396,231.30</b>
<b>800 Other Objects</b>	
810 Dues and Fees	632.00
<b>Total Other Objects</b>	<b>\$632.00</b>
<b>Total 1000 Instruction</b>	<b>\$15,420,868.63</b>

LEA : 127042853 Freedom Area SD

Printed 1/19/2022 1:40:12 PM

**General Fund (10)**

**1100 Regular Programs – Elementary / Secondary**

	<u>Elementary</u>	<u>Secondary</u>	<u>Federal</u>	<u>Total</u>
<b>100 Personnel Services – Salaries</b>				
100 Personnel Services – Salaries	2,275,887.56	2,533,944.47	214,980.76	5,024,812.79
<b>Total Personnel Services – Salaries</b>	<b>\$2,275,887.56</b>	<b>\$2,533,944.47</b>	<b>\$214,980.76</b>	<b>\$5,024,812.79</b>
<b>200 Personnel Services – Employee Benefits</b>				
210 Group Insurance – Contracted Provider	2,163.25	2,756.01	202.68	5,121.94
220 Social Security Contributions	171,786.19	191,428.07	16,069.67	379,283.93
230 PSERS Retirement Contributions	785,350.68	859,912.94	70,230.54	1,715,494.16
260 Workers' Compensation	15,662.86	17,439.87	1,477.95	34,580.68
270 Group Insurance – Self-Insurance	646,924.00	799,778.02	62,426.00	1,509,128.02
292 Health Savings Accounts	51,646.00	66,770.70	5,880.00	124,296.70
<b>Total Personnel Services – Employee Benefits</b>	<b>\$1,673,532.98</b>	<b>\$1,938,085.61</b>	<b>\$156,286.84</b>	<b>\$3,767,905.43</b>
<b>300 Purchased Professional and Technical Services</b>				
322 Professional Educational Services – Ius	9,790.00	4,080.00		13,870.00
323 Professional Educational Services – Other Educational Agencies	160,828.44	176,391.10	32,800.00	370,019.54
340 Technical Services			5,480.00	5,480.00
<b>Total Purchased Professional and Technical Services</b>	<b>\$170,618.44</b>	<b>\$180,471.10</b>	<b>\$38,280.00</b>	<b>\$389,369.54</b>
<b>400 Purchased Property Services</b>				
430 Repairs and Maintenance Services		4,043.13		4,043.13
<b>Total Purchased Property Services</b>		<b>\$4,043.13</b>		<b>\$4,043.13</b>
<b>500 Other Purchased Services</b>				
510 Student Transportation Services		2,173.00		2,173.00
562 Tuition To Pennsylvania Charter Schools	315,226.05	522,821.35		838,047.40
<b>Total Other Purchased Services</b>	<b>\$315,226.05</b>	<b>\$524,994.35</b>		<b>\$840,220.40</b>
<b>600 Supplies</b>				
610 General Supplies	122,321.36	221,086.65	70,514.96	413,922.97
640 Books and Periodicals	114,625.00	79,576.07	18,278.94	212,480.01
650 Supplies & Fees – Technology Related		20,378.50		20,378.50
<b>Total Supplies</b>	<b>\$236,946.36</b>	<b>\$321,041.22</b>	<b>\$88,793.90</b>	<b>\$646,781.48</b>
<b>700 Property</b>				
758 Capitalized Technology Software - Original			94,115.38	94,115.38
768 Capitalized Technology Software - Replacement	57,649.30	81,704.28	162,762.34	302,115.92
<b>Total Property</b>	<b>\$57,649.30</b>	<b>\$81,704.28</b>	<b>\$256,877.72</b>	<b>\$396,231.30</b>
<b>800 Other Objects</b>				
810 Dues and Fees		284.00		284.00
<b>Total Other Objects</b>		<b>\$284.00</b>		<b>\$284.00</b>
<b>Total 1100 Regular Programs – Elementary / Secondary</b>	<b>\$4,729,860.69</b>	<b>\$5,584,568.16</b>	<b>\$755,219.22</b>	<b>\$11,069,648.07</b>

LEA : 127042853 Freedom Area SD

Printed 1/19/2022 1:40:12 PM

**General Fund (10)**

**1110 Regular Programs**

	<u>Elementary</u>	<u>Secondary</u>	<u>Federal</u>	<u>Total</u>
<b>100 Personnel Services – Salaries</b>				
100 Personnel Services – Salaries	2,275,887.56	2,533,944.47	16,670.00	4,826,502.03
<b>Total Personnel Services – Salaries</b>	<b>\$2,275,887.56</b>	<b>\$2,533,944.47</b>	<b>\$16,670.00</b>	<b>\$4,826,502.03</b>
<b>200 Personnel Services – Employee Benefits</b>				
210 Group Insurance – Contracted Provider	2,163.25	2,756.01		4,919.26
220 Social Security Contributions	171,786.19	191,428.07	1,264.36	364,478.62
230 PSERS Retirement Contributions	785,350.68	859,912.94	2,828.84	1,648,092.46
260 Workers' Compensation	15,662.86	17,439.87	115.06	33,217.79
270 Group Insurance – Self-Insurance	646,924.00	799,778.02		1,446,702.02
292 Health Savings Accounts	51,646.00	66,770.70		118,416.70
<b>Total Personnel Services – Employee Benefits</b>	<b>\$1,673,532.98</b>	<b>\$1,938,085.61</b>	<b>\$4,208.26</b>	<b>\$3,615,826.85</b>
<b>300 Purchased Professional and Technical Services</b>				
322 Professional Educational Services – Ius	9,790.00	4,080.00		13,870.00
323 Professional Educational Services – Other Educational Agencies	160,828.44	176,391.10	32,800.00	370,019.54
340 Technical Services			5,480.00	5,480.00
<b>Total Purchased Professional and Technical Services</b>	<b>\$170,618.44</b>	<b>\$180,471.10</b>	<b>\$38,280.00</b>	<b>\$389,369.54</b>
<b>400 Purchased Property Services</b>				
430 Repairs and Maintenance Services		4,043.13		4,043.13
<b>Total Purchased Property Services</b>		<b>\$4,043.13</b>		<b>\$4,043.13</b>
<b>500 Other Purchased Services</b>				
510 Student Transportation Services		2,173.00		2,173.00
562 Tuition To Pennsylvania Charter Schools	315,226.05	522,821.35		838,047.40
<b>Total Other Purchased Services</b>	<b>\$315,226.05</b>	<b>\$524,994.35</b>		<b>\$840,220.40</b>
<b>600 Supplies</b>				
610 General Supplies	122,321.36	221,086.65	66,137.96	409,545.97
640 Books and Periodicals	114,625.00	79,576.07	18,278.94	212,480.01
650 Supplies & Fees – Technology Related		20,378.50		20,378.50
<b>Total Supplies</b>	<b>\$236,946.36</b>	<b>\$321,041.22</b>	<b>\$84,416.90</b>	<b>\$642,404.48</b>
<b>700 Property</b>				
758 Capitalized Technology Software - Original			94,115.38	94,115.38
768 Capitalized Technology Software - Replacement	57,649.30	81,704.28	162,762.34	302,115.92
<b>Total Property</b>	<b>\$57,649.30</b>	<b>\$81,704.28</b>	<b>\$256,877.72</b>	<b>\$396,231.30</b>
<b>800 Other Objects</b>				
810 Dues and Fees		284.00		284.00
<b>Total Other Objects</b>		<b>\$284.00</b>		<b>\$284.00</b>
<b>Total 1110 Regular Programs</b>	<b>\$4,729,860.69</b>	<b>\$5,584,568.16</b>	<b>\$400,452.88</b>	<b>\$10,714,881.73</b>

**General Fund (10)**

1190 Federally-Funded Regular Programs	<u>Elementary</u>	<u>Secondary</u>	<u>Federal</u>	<u>Total</u>
<b>100 Personnel Services – Salaries</b>				
100 Personnel Services – Salaries			198,310.76	198,310.76
<b>Total Personnel Services – Salaries</b>			<b>\$198,310.76</b>	<b>\$198,310.76</b>
<b>200 Personnel Services – Employee Benefits</b>				
210 Group Insurance – Contracted Provider			202.68	202.68
220 Social Security Contributions			14,805.31	14,805.31
230 PSERS Retirement Contributions			67,401.70	67,401.70
260 Workers' Compensation			1,362.89	1,362.89
270 Group Insurance – Self-Insurance			62,426.00	62,426.00
292 Health Savings Accounts			5,880.00	5,880.00
<b>Total Personnel Services – Employee Benefits</b>			<b>\$152,078.58</b>	<b>\$152,078.58</b>
<b>600 Supplies</b>				
610 General Supplies			4,377.00	4,377.00
<b>Total Supplies</b>			<b>\$4,377.00</b>	<b>\$4,377.00</b>
<b>Total 1190 Federally-Funded Regular Programs</b>			<b>\$354,766.34</b>	<b>\$354,766.34</b>

**General Fund (10)**

<b>1200 Special Programs – Elementary / Secondary</b>	<u>Elementary</u>	<u>Secondary</u>	<u>Federal</u>	<u>Total</u>
<b>100 Personnel Services – Salaries</b>				
100 Personnel Services – Salaries	546,969.45	408,647.51	133,211.45	1,088,828.41
<b>Total Personnel Services – Salaries</b>	<b>\$546,969.45</b>	<b>\$408,647.51</b>	<b>\$133,211.45</b>	<b>\$1,088,828.41</b>
<b>200 Personnel Services – Employee Benefits</b>				
210 Group Insurance – Contracted Provider	516.12	442.32	78.84	1,037.28
220 Social Security Contributions	40,987.14	30,873.26	10,190.70	82,051.10
230 PSERS Retirement Contributions	185,730.77	138,829.52	44,943.38	369,503.67
260 Workers' Compensation	3,753.74	2,821.31	917.35	7,492.40
270 Group Insurance – Self-Insurance	162,539.60	118,524.04	28,761.00	309,824.64
292 Health Savings Accounts	14,973.00	8,547.00	5,880.00	29,400.00
<b>Total Personnel Services – Employee Benefits</b>	<b>\$408,500.37</b>	<b>\$300,037.45</b>	<b>\$90,771.27</b>	<b>\$799,309.09</b>
<b>300 Purchased Professional and Technical Services</b>				
322 Professional Educational Services – Ius	200,059.79	200,040.58		400,100.37
323 Professional Educational Services – Other Educational Agencies	20,979.45	17,363.86		38,343.31
330 Other Professional Services	69,572.71	14,159.16		83,731.87
<b>Total Purchased Professional and Technical Services</b>	<b>\$290,611.95</b>	<b>\$231,563.60</b>		<b>\$522,175.55</b>
<b>500 Other Purchased Services</b>				
562 Tuition To Pennsylvania Charter Schools	158,598.64	178,775.44		337,374.08
563 Tuition To Nonpublic Schools	717,505.73	131,133.34		848,639.07
567 Tuition To Approved Private Schools (APS) and PA Chartered Schools for the Deaf and Blind	122,310.17	140,423.26		262,733.43
568 Tuition To Private Residential Rehabilitative Institutions (PRRI) [In-State] and Detention Centers	26,299.81	12,845.00		39,144.81
594 IU Payment By Withholding for Institutionalized Children's Programs – Special Classes	824.51			824.51
<b>Total Other Purchased Services</b>	<b>\$1,025,538.86</b>	<b>\$463,177.04</b>		<b>\$1,488,715.90</b>
<b>600 Supplies</b>				
610 General Supplies	7,391.46	7,429.17		14,820.63
<b>Total Supplies</b>	<b>\$7,391.46</b>	<b>\$7,429.17</b>		<b>\$14,820.63</b>
<b>800 Other Objects</b>				
810 Dues and Fees	12.00	336.00		348.00
<b>Total Other Objects</b>	<b>\$12.00</b>	<b>\$336.00</b>		<b>\$348.00</b>
<b>Total 1200 Special Programs – Elementary / Secondary</b>	<b>\$2,279,024.09</b>	<b>\$1,411,190.77</b>	<b>\$223,982.72</b>	<b>\$3,914,197.58</b>

**General Fund (10)**

**1210 Life Skills Support**

	<u>Elementary</u>	<u>Secondary</u>	<u>Federal</u>	<u>Total</u>
<b>100 Personnel Services – Salaries</b>				
100 Personnel Services – Salaries		14,160.52	52,664.00	66,824.52
<b>Total Personnel Services – Salaries</b>		<b>\$14,160.52</b>	<b>\$52,664.00</b>	<b>\$66,824.52</b>
<b>200 Personnel Services – Employee Benefits</b>				
210 Group Insurance – Contracted Provider			67.56	67.56
220 Social Security Contributions		1,083.30	4,028.79	5,112.09
230 PSERS Retirement Contributions		4,886.80	17,829.27	22,716.07
260 Workers' Compensation		97.70	361.56	459.26
270 Group Insurance – Self-Insurance			21,652.00	21,652.00
292 Health Savings Accounts			1,960.00	1,960.00
<b>Total Personnel Services – Employee Benefits</b>		<b>\$6,067.80</b>	<b>\$45,899.18</b>	<b>\$51,966.98</b>
<b>300 Purchased Professional and Technical Services</b>				
322 Professional Educational Services – Ius	79,599.99	79,600.00		159,199.99
<b>Total Purchased Professional and Technical Services</b>	<b>\$79,599.99</b>	<b>\$79,600.00</b>		<b>\$159,199.99</b>
<b>500 Other Purchased Services</b>				
568 Tuition To Private Residential Rehabilitative Institutions (PRRI) [In-State] and Detention Centers		12,845.00		12,845.00
<b>Total Other Purchased Services</b>		<b>\$12,845.00</b>		<b>\$12,845.00</b>
<b>600 Supplies</b>				
610 General Supplies		4,122.37		4,122.37
<b>Total Supplies</b>		<b>\$4,122.37</b>		<b>\$4,122.37</b>
<b>Total 1210 Life Skills Support</b>	<b>\$79,599.99</b>	<b>\$116,795.69</b>	<b>\$98,563.18</b>	<b>\$294,958.86</b>



**General Fund (10)**

	<u>Elementary</u>	<u>Secondary</u>	<u>Federal</u>	<u>Total</u>
<b>1220 Sensory Support</b>				
<b>100 Personnel Services – Salaries</b>				
100 Personnel Services – Salaries	100,499.68	42,104.32		142,604.00
<b>Total Personnel Services – Salaries</b>	<b>\$100,499.68</b>	<b>\$42,104.32</b>		<b>\$142,604.00</b>
<b>200 Personnel Services – Employee Benefits</b>				
210 Group Insurance – Contracted Provider	99.96	35.16		135.12
220 Social Security Contributions	7,506.25	3,085.62		10,591.87
230 PSERS Retirement Contributions	33,555.64	14,350.81		47,906.45
260 Workers' Compensation	689.70	289.76		979.46
270 Group Insurance – Self-Insurance	32,044.96	11,259.04		43,304.00
292 Health Savings Accounts	2,901.00	1,019.00		3,920.00
<b>Total Personnel Services – Employee Benefits</b>	<b>\$76,797.51</b>	<b>\$30,039.39</b>		<b>\$106,836.90</b>
<b>600 Supplies</b>				
610 General Supplies	216.00			216.00
<b>Total Supplies</b>	<b>\$216.00</b>			<b>\$216.00</b>
<b>Total 1220 Sensory Support</b>	<b>\$177,513.19</b>	<b>\$72,143.71</b>		<b>\$249,656.90</b>

**General Fund (10)**

**1230 Emotional Support**

**300 Purchased Professional and Technical Services**

	<u>Elementary</u>	<u>Secondary</u>	<u>Federal</u>	<u>Total</u>
322 Professional Educational Services – lus		120,440.58		120,440.58
<b>Total Purchased Professional and Technical Services</b>		<b>\$120,440.58</b>		<b>\$120,440.58</b>

**500 Other Purchased Services**

563 Tuition To Nonpublic Schools	717,505.73	131,133.34		848,639.07
<b>Total Other Purchased Services</b>	<b>\$717,505.73</b>	<b>\$131,133.34</b>		<b>\$848,639.07</b>
<b>Total 1230 Emotional Support</b>	<b>\$717,505.73</b>	<b>\$251,573.92</b>		<b>\$969,079.65</b>

**General Fund (10)**

**1240 Academic Support**

	<u>Elementary</u>	<u>Secondary</u>	<u>Federal</u>	<u>Total</u>
<b>100 Personnel Services – Salaries</b>				
100 Personnel Services – Salaries	408,735.49	327,957.18	80,547.45	817,240.12
<b>Total Personnel Services – Salaries</b>	<b>\$408,735.49</b>	<b>\$327,957.18</b>	<b>\$80,547.45</b>	<b>\$817,240.12</b>
<b>200 Personnel Services – Employee Benefits</b>				
210 Group Insurance – Contracted Provider	382.44	373.32	11.28	767.04
220 Social Security Contributions	30,615.93	24,857.43	6,161.91	61,635.27
230 PSERS Retirement Contributions	139,325.59	111,335.22	27,114.11	277,774.92
260 Workers' Compensation	2,804.69	2,266.24	555.79	5,626.72
270 Group Insurance – Self-Insurance	119,944.64	96,715.00	7,109.00	223,768.64
292 Health Savings Accounts	11,092.00	6,548.00	3,920.00	21,560.00
<b>Total Personnel Services – Employee Benefits</b>	<b>\$304,165.29</b>	<b>\$242,095.21</b>	<b>\$44,872.09</b>	<b>\$591,132.59</b>
<b>300 Purchased Professional and Technical Services</b>				
322 Professional Educational Services – Ius	986.96			986.96
323 Professional Educational Services – Other Educational Agencies	20,979.45	17,363.86		38,343.31
<b>Total Purchased Professional and Technical Services</b>	<b>\$21,966.41</b>	<b>\$17,363.86</b>		<b>\$39,330.27</b>
<b>500 Other Purchased Services</b>				
562 Tuition To Pennsylvania Charter Schools	158,598.64	178,775.44		337,374.08
<b>Total Other Purchased Services</b>	<b>\$158,598.64</b>	<b>\$178,775.44</b>		<b>\$337,374.08</b>
<b>600 Supplies</b>				
610 General Supplies	7,175.46	3,306.80		10,482.26
<b>Total Supplies</b>	<b>\$7,175.46</b>	<b>\$3,306.80</b>		<b>\$10,482.26</b>
<b>800 Other Objects</b>				
810 Dues and Fees	12.00	336.00		348.00
<b>Total Other Objects</b>	<b>\$12.00</b>	<b>\$336.00</b>		<b>\$348.00</b>
<b>Total 1240 Academic Support</b>	<b>\$900,653.29</b>	<b>\$769,834.49</b>	<b>\$125,419.54</b>	<b>\$1,795,907.32</b>

**General Fund (10)**

	<u>Elementary</u>	<u>Secondary</u>	<u>Federal</u>	<u>Total</u>
<b>1241 Learning Support – Public</b>				
<b>100 Personnel Services – Salaries</b>				
100 Personnel Services – Salaries	368,172.55	307,004.23	80,547.45	755,724.23
<b>Total Personnel Services – Salaries</b>	<b>\$368,172.55</b>	<b>\$307,004.23</b>	<b>\$80,547.45</b>	<b>\$755,724.23</b>
<b>200 Personnel Services – Employee Benefits</b>				
210 Group Insurance – Contracted Provider	337.80	350.40		688.20
220 Social Security Contributions	27,559.01	23,278.40	6,161.91	56,999.32
230 PSERS Retirement Contributions	125,555.06	104,221.69	27,114.11	256,890.86
260 Workers' Compensation	2,526.75	2,122.62	555.79	5,205.16
270 Group Insurance – Self-Insurance	105,654.32	89,353.32	6,941.00	201,948.64
292 Health Savings Accounts	9,800.00	5,880.00	3,920.00	19,600.00
<b>Total Personnel Services – Employee Benefits</b>	<b>\$271,432.94</b>	<b>\$225,206.43</b>	<b>\$44,692.81</b>	<b>\$541,332.18</b>
<b>300 Purchased Professional and Technical Services</b>				
323 Professional Educational Services – Other Educational Agencies	20,979.45	17,363.86		38,343.31
<b>Total Purchased Professional and Technical Services</b>	<b>\$20,979.45</b>	<b>\$17,363.86</b>		<b>\$38,343.31</b>
<b>500 Other Purchased Services</b>				
562 Tuition To Pennsylvania Charter Schools	158,598.64	178,775.44		337,374.08
<b>Total Other Purchased Services</b>	<b>\$158,598.64</b>	<b>\$178,775.44</b>		<b>\$337,374.08</b>
<b>600 Supplies</b>				
610 General Supplies	2,798.51	1,153.72		3,952.23
<b>Total Supplies</b>	<b>\$2,798.51</b>	<b>\$1,153.72</b>		<b>\$3,952.23</b>
<b>Total 1241 Learning Support – Public</b>	<b>\$821,982.09</b>	<b>\$729,503.68</b>	<b>\$125,240.26</b>	<b>\$1,676,726.03</b>

**General Fund (10)**

	<u>Elementary</u>	<u>Secondary</u>	<u>Federal</u>	<u>Total</u>
<b>1243 Gifted Support</b>				
<b>100 Personnel Services – Salaries</b>				
100 Personnel Services – Salaries	40,562.94	20,952.95		61,515.89
<b>Total Personnel Services – Salaries</b>	<b>\$40,562.94</b>	<b>\$20,952.95</b>		<b>\$61,515.89</b>
<b>200 Personnel Services – Employee Benefits</b>				
210 Group Insurance – Contracted Provider	44.64	22.92	11.28	78.84
220 Social Security Contributions	3,056.92	1,579.03		4,635.95
230 PSERS Retirement Contributions	13,770.53	7,113.53		20,884.06
260 Workers' Compensation	277.94	143.62		421.56
270 Group Insurance – Self-Insurance	14,290.32	7,361.68	168.00	21,820.00
292 Health Savings Accounts	1,292.00	668.00		1,960.00
<b>Total Personnel Services – Employee Benefits</b>	<b>\$32,732.35</b>	<b>\$16,888.78</b>	<b>\$179.28</b>	<b>\$49,800.41</b>
<b>300 Purchased Professional and Technical Services</b>				
322 Professional Educational Services – Ius	986.96			986.96
<b>Total Purchased Professional and Technical Services</b>	<b>\$986.96</b>			<b>\$986.96</b>
<b>600 Supplies</b>				
610 General Supplies	4,376.95	2,153.08		6,530.03
<b>Total Supplies</b>	<b>\$4,376.95</b>	<b>\$2,153.08</b>		<b>\$6,530.03</b>
<b>800 Other Objects</b>				
810 Dues and Fees	12.00	336.00		348.00
<b>Total Other Objects</b>	<b>\$12.00</b>	<b>\$336.00</b>		<b>\$348.00</b>
<b>Total 1243 Gifted Support</b>	<b>\$78,671.20</b>	<b>\$40,330.81</b>	<b>\$179.28</b>	<b>\$119,181.29</b>

General Fund (10)

1260 Physical Support

300 Purchased Professional and Technical Services

330 Other Professional Services

**Total Purchased Professional and Technical Services**

**Total 1260 Physical Support**

	<u>Elementary</u>	<u>Secondary</u>	<u>Federal</u>	<u>Total</u>
	69,572.71	14,159.16		83,731.87
	<b>\$69,572.71</b>	<b>\$14,159.16</b>		<b>\$83,731.87</b>
	<b>\$69,572.71</b>	<b>\$14,159.16</b>		<b>\$83,731.87</b>

**General Fund (10)**

	<u>Elementary</u>	<u>Secondary</u>	<u>Federal</u>	<u>Total</u>
<b>1270 Multi-Handicapped Support</b>				
<b>100 Personnel Services – Salaries</b>				
100 Personnel Services – Salaries	37,734.28	24,425.49		62,159.77
<b>Total Personnel Services – Salaries</b>	<b>\$37,734.28</b>	<b>\$24,425.49</b>		<b>\$62,159.77</b>
<b>200 Personnel Services – Employee Benefits</b>				
210 Group Insurance – Contracted Provider	33.72	33.84		67.56
220 Social Security Contributions	2,864.96	1,846.91		4,711.87
230 PSERS Retirement Contributions	12,849.54	8,256.69		21,106.23
260 Workers' Compensation	259.35	167.61		426.96
270 Group Insurance – Self-Insurance	10,550.00	10,550.00		21,100.00
292 Health Savings Accounts	980.00	980.00		1,960.00
<b>Total Personnel Services – Employee Benefits</b>	<b>\$27,537.57</b>	<b>\$21,835.05</b>		<b>\$49,372.62</b>
<b>300 Purchased Professional and Technical Services</b>				
322 Professional Educational Services – Ius	119,472.84			119,472.84
<b>Total Purchased Professional and Technical Services</b>	<b>\$119,472.84</b>			<b>\$119,472.84</b>
<b>500 Other Purchased Services</b>				
568 Tuition To Private Residential Rehabilitative Institutions (PRRI) [In-State] and Detention Centers	26,299.81			26,299.81
<b>Total Other Purchased Services</b>	<b>\$26,299.81</b>			<b>\$26,299.81</b>
<b>Total 1270 Multi-Handicapped Support</b>	<b>\$211,044.50</b>	<b>\$46,260.54</b>		<b>\$257,305.04</b>

General Fund (10)

1290 Special Programs - Other Support

500 Other Purchased Services

	<u>Elementary</u>	<u>Secondary</u>	<u>Federal</u>	<u>Total</u>
567 Tuition To Approved Private Schools (APS) and PA Chartered Schools for the Deaf and Blind	122,310.17	140,423.26		262,733.43
594 IU Payment By Withholding for Institutionalized Children's Programs – Special Classes	824.51			824.51
<b>Total Other Purchased Services</b>	<b>\$123,134.68</b>	<b>\$140,423.26</b>		<b>\$263,557.94</b>
<b>Total 1290 Special Programs - Other Support</b>	<b>\$123,134.68</b>	<b>\$140,423.26</b>		<b>\$263,557.94</b>



General Fund (10)

1300 Vocational Education

500 Other Purchased Services

564 Tuition To Career and Technology Centers

**Total Other Purchased Services**

**Total 1300 Vocational Education**

Elementary

Secondary

Federal

Total

425,343.98

425,343.98

**\$425,343.98**

**\$425,343.98**

**\$425,343.98**

**\$425,343.98**

General Fund (10)

1500 Nonpublic School Programs

Elementary

Secondary

Federal

Total

300 Purchased Professional and Technical Services

323 Professional Educational Services – Other Educational Agencies

5,539.00

5,539.00

**Total Purchased Professional and Technical Services**

**\$5,539.00**

**\$5,539.00**

600 Supplies

610 General Supplies

6,140.00

6,140.00

**Total Supplies**

**\$6,140.00**

**\$6,140.00**

**Total 1500 Nonpublic School Programs**

**\$11,679.00**

**\$11,679.00**

**General Fund (10)**

**2000 Support Services**

**Total**

**100 Personnel Services – Salaries**

100 Personnel Services – Salaries 2,541,196.05

**Total Personnel Services – Salaries \$2,541,196.05**

**200 Personnel Services – Employee Benefits**

210 Group Insurance – Contracted Provider 4,062.14

220 Social Security Contributions 189,844.07

230 PSERS Retirement Contributions 838,169.83

240 Tuition Reimbursement 20,841.13

260 Workers' Compensation 18,062.55

270 Group Insurance – Self-Insurance 666,333.00

292 Health Savings Accounts 58,309.97

**Total Personnel Services – Employee Benefits \$1,795,622.69**

**300 Purchased Professional and Technical Services**

323 Professional Educational Services – Other Educational Agencies 2,960.10

329 Professional Educational Services – Other 80,892.03

330 Other Professional Services 137,477.12

340 Technical Services 80,388.97

350 Security / Safety Services 80,334.36

**Total Purchased Professional and Technical Services \$382,052.58**

**400 Purchased Property Services**

410 Cleaning Services 13,855.68

420 Utility Services 24,932.53

430 Repairs and Maintenance Services 126,283.52

440 Rentals 40,985.79

**Total Purchased Property Services \$206,057.52**

**500 Other Purchased Services**

513 Contracted Carriers 1,001,450.77

516 Student Transportation Services From the IU 7,645.11

520 Insurance – General 1,708.75

523 General Property and Liability Insurance 68,824.00

530 Communications 33,870.56

549 Other Advertising/Public Relations 8,020.18

550 Printing and Binding 1,322.96

580 Travel 3,304.13

591 Services Purchased Locally 603.76

595 IU Payments By Withholding 11,993.04

**Total Other Purchased Services \$1,138,743.26**

**600 Supplies**

610 General Supplies 324,673.33

620 Energy 335,133.68

640 Books and Periodicals 8,975.14

650 Supplies & Fees – Technology Related 10,655.10

**Total Supplies \$679,437.25**

**General Fund (10)**

**2000 Support Services**

**Total**

**700 Property**

752 Capital Equipment – Original and Additional

36,658.00

**Total Property**

**\$36,658.00**

**800 Other Objects**

810 Dues and Fees

12,546.20

**Total Other Objects**

**\$12,546.20**

**Total 2000 Support Services**

**\$6,792,313.55**

**General Fund (10)**

	<u>Elementary</u>	<u>Secondary</u>	<u>Federal</u>	<u>Total</u>
<b>2100 Support Services – Students</b>				
<b>100 Personnel Services – Salaries</b>				
100 Personnel Services – Salaries	146,122.87	281,584.28	63,039.00	545,685.89
<b>Total Personnel Services – Salaries</b>	<b>\$146,122.87</b>	<b>\$281,584.28</b>	<b>\$63,039.00</b>	<b>\$545,685.89</b>
<b>200 Personnel Services – Employee Benefits</b>				
210 Group Insurance – Contracted Provider	201.81	351.51		553.32
220 Social Security Contributions	11,058.14	21,224.41	4,822.47	41,306.98
230 PSERS Retirement Contributions	49,977.40	96,141.21	21,409.72	186,488.02
260 Workers' Compensation	1,507.93	1,939.45	432.12	4,258.59
270 Group Insurance – Self-Insurance	49,322.87	89,650.13		146,564.00
292 Health Savings Accounts	7,349.97	6,860.00		14,209.97
<b>Total Personnel Services – Employee Benefits</b>	<b>\$119,418.12</b>	<b>\$216,166.71</b>	<b>\$26,664.31</b>	<b>\$393,380.88</b>
<b>300 Purchased Professional and Technical Services</b>				
329 Professional Educational Services – Other				54,280.00
340 Technical Services	6,464.01	7,179.96		22,643.97
<b>Total Purchased Professional and Technical Services</b>	<b>\$6,464.01</b>	<b>\$7,179.96</b>		<b>\$76,923.97</b>
<b>500 Other Purchased Services</b>				
520 Insurance – General		158.00		158.00
<b>Total Other Purchased Services</b>		<b>\$158.00</b>		<b>\$158.00</b>
<b>600 Supplies</b>				
610 General Supplies	6,078.78	10,361.61		16,440.39
<b>Total Supplies</b>	<b>\$6,078.78</b>	<b>\$10,361.61</b>		<b>\$16,440.39</b>
<b>Total 2100 Support Services – Students</b>	<b>\$278,083.78</b>	<b>\$515,450.56</b>	<b>\$89,703.31</b>	<b>\$1,032,589.13</b>

**General Fund (10)**

	<u>Elementary</u>	<u>Secondary</u>	<u>Federal</u>	<u>Total</u>
<b>2120 Guidance Services</b>				
<b>100 Personnel Services – Salaries</b>				
100 Personnel Services – Salaries	111,749.45	247,211.05	63,039.00	421,999.50
<b>Total Personnel Services – Salaries</b>	<b>\$111,749.45</b>	<b>\$247,211.05</b>	<b>\$63,039.00</b>	<b>\$421,999.50</b>
<b>200 Personnel Services – Employee Benefits</b>				
210 Group Insurance – Contracted Provider	89.88	239.46		329.34
220 Social Security Contributions	8,454.48	18,620.84	4,822.47	31,897.79
230 PSERS Retirement Contributions	38,115.11	84,279.02	21,409.72	143,803.85
260 Workers' Compensation	1,270.71	1,702.32	432.12	3,405.15
270 Group Insurance – Self-Insurance	28,797.16	69,124.96		97,922.12
292 Health Savings Accounts	3,920.00	4,900.00		8,820.00
<b>Total Personnel Services – Employee Benefits</b>	<b>\$80,647.34</b>	<b>\$178,866.60</b>	<b>\$26,664.31</b>	<b>\$286,178.25</b>
<b>300 Purchased Professional and Technical Services</b>				
340 Technical Services	6,464.01	7,179.96		13,643.97
<b>Total Purchased Professional and Technical Services</b>	<b>\$6,464.01</b>	<b>\$7,179.96</b>		<b>\$13,643.97</b>
<b>500 Other Purchased Services</b>				
520 Insurance – General		158.00		158.00
<b>Total Other Purchased Services</b>		<b>\$158.00</b>		<b>\$158.00</b>
<b>600 Supplies</b>				
610 General Supplies	2,457.88	5,611.15		8,069.03
<b>Total Supplies</b>	<b>\$2,457.88</b>	<b>\$5,611.15</b>		<b>\$8,069.03</b>
<b>Total 2120 Guidance Services</b>	<b>\$201,318.68</b>	<b>\$439,026.76</b>	<b>\$89,703.31</b>	<b>\$730,048.75</b>

General Fund (10)

2130 Attendance Services

Elementary

Secondary

Federal

Total

100 Personnel Services – Salaries

100 Personnel Services – Salaries

37,408.82

**Total Personnel Services – Salaries**

**\$37,408.82**

200 Personnel Services – Employee Benefits

220 Social Security Contributions

2,861.80

230 PSERS Retirement Contributions

12,909.77

260 Workers' Compensation

258.14

**Total Personnel Services – Employee Benefits**

**\$16,029.71**

300 Purchased Professional and Technical Services

340 Technical Services

9,000.00

**Total Purchased Professional and Technical Services**

**\$9,000.00**

**Total 2130 Attendance Services**

**\$62,438.53**

**General Fund (10)**

	<u>Elementary</u>	<u>Secondary</u>	<u>Federal</u>	<u>Total</u>
<b>2140 Psychological Services</b>				
<b>100 Personnel Services – Salaries</b>				
100 Personnel Services – Salaries	34,373.42	34,373.23		68,746.65
<b>Total Personnel Services – Salaries</b>	<b>\$34,373.42</b>	<b>\$34,373.23</b>		<b>\$68,746.65</b>
<b>200 Personnel Services – Employee Benefits</b>				
210 Group Insurance – Contracted Provider	111.93	112.05		223.98
220 Social Security Contributions	2,603.66	2,603.57		5,207.23
230 PSERS Retirement Contributions	11,862.29	11,862.19		23,724.48
260 Workers' Compensation	237.22	237.13		474.35
270 Group Insurance – Self-Insurance	20,525.71	20,525.17		41,050.88
292 Health Savings Accounts	3,429.97	1,960.00		5,389.97
<b>Total Personnel Services – Employee Benefits</b>	<b>\$38,770.78</b>	<b>\$37,300.11</b>		<b>\$76,070.89</b>
<b>600 Supplies</b>				
610 General Supplies	3,620.90	4,750.46		8,371.36
<b>Total Supplies</b>	<b>\$3,620.90</b>	<b>\$4,750.46</b>		<b>\$8,371.36</b>
<b>Total 2140 Psychological Services</b>	<b>\$76,765.10</b>	<b>\$76,423.80</b>		<b>\$153,188.90</b>



General Fund (10)

2160 Social Work Services

Elementary

Secondary

Federal

Total

300 Purchased Professional and Technical Services

329 Professional Educational Services – Other

54,280.00

**Total Purchased Professional and Technical Services**

**\$54,280.00**

**Total 2160 Social Work Services**

**\$54,280.00**

General Fund (10)

2170 Student Accounting Services

Elementary

Secondary

Federal

Total

100 Personnel Services – Salaries

100 Personnel Services – Salaries

17,530.92

**Total Personnel Services – Salaries**

**\$17,530.92**

200 Personnel Services – Employee Benefits

220 Social Security Contributions

1,340.16

230 PSERS Retirement Contributions

6,049.92

260 Workers' Compensation

120.95

270 Group Insurance – Self-Insurance

7,591.00

**Total Personnel Services – Employee Benefits**

**\$15,102.03**

**Total 2170 Student Accounting Services**

**\$32,632.95**

**General Fund (10)**

**2200 Support Services – Instructional Staff**

	<u>Elementary</u>	<u>Secondary</u>	<u>Federal</u>	<u>Total</u>
<b>100 Personnel Services – Salaries</b>				
100 Personnel Services – Salaries	98,916.92	53,560.33	4,345.00	156,822.25
<b>Total Personnel Services – Salaries</b>	<b>\$98,916.92</b>	<b>\$53,560.33</b>	<b>\$4,345.00</b>	<b>\$156,822.25</b>
<b>200 Personnel Services – Employee Benefits</b>				
210 Group Insurance – Contracted Provider	138.79	71.33		210.12
220 Social Security Contributions	7,426.23	4,066.28	330.22	11,822.73
230 PSERS Retirement Contributions	33,618.57	19,122.11	1,499.46	54,240.14
240 Tuition Reimbursement	4,252.43	16,588.70		20,841.13
260 Workers' Compensation	679.02	384.37	29.98	1,093.37
270 Group Insurance – Self-Insurance	30,374.00	9,058.00		39,432.00
292 Health Savings Accounts	2,450.00	490.00		2,940.00
<b>Total Personnel Services – Employee Benefits</b>	<b>\$78,939.04</b>	<b>\$49,780.79</b>	<b>\$1,859.66</b>	<b>\$130,579.49</b>
<b>300 Purchased Professional and Technical Services</b>				
323 Professional Educational Services – Other Educational Agencies	1,283.40	1,676.70		2,960.10
329 Professional Educational Services – Other	2,200.11	2,924.93		5,125.04
340 Technical Services	1,360.58	1,360.57		2,721.15
<b>Total Purchased Professional and Technical Services</b>	<b>\$4,844.09</b>	<b>\$5,962.20</b>		<b>\$10,806.29</b>
<b>500 Other Purchased Services</b>				
580 Travel	1,490.00	1,490.00		2,980.00
<b>Total Other Purchased Services</b>	<b>\$1,490.00</b>	<b>\$1,490.00</b>		<b>\$2,980.00</b>
<b>600 Supplies</b>				
610 General Supplies	2,691.53	12,241.22		14,932.75
640 Books and Periodicals	4,169.27	4,805.87		8,975.14
<b>Total Supplies</b>	<b>\$6,860.80</b>	<b>\$17,047.09</b>		<b>\$23,907.89</b>
<b>Total 2200 Support Services – Instructional Staff</b>	<b>\$191,050.85</b>	<b>\$127,840.41</b>	<b>\$6,204.66</b>	<b>\$325,095.92</b>

**General Fund (10)**

	<u>Elementary</u>	<u>Secondary</u>	<u>Federal</u>	<u>Total</u>
<b>2250 School Library Services</b>				
<b>100 Personnel Services – Salaries</b>				
100 Personnel Services – Salaries	74,896.67	30,340.08		105,236.75
<b>Total Personnel Services – Salaries</b>	<b>\$74,896.67</b>	<b>\$30,340.08</b>		<b>\$105,236.75</b>
<b>200 Personnel Services – Employee Benefits</b>				
210 Group Insurance – Contracted Provider	101.28	33.84		135.12
220 Social Security Contributions	5,597.13	2,302.70		7,899.83
230 PSERS Retirement Contributions	25,329.18	10,297.83		35,627.01
260 Workers' Compensation	513.30	207.93		721.23
270 Group Insurance – Self-Insurance	25,261.50	3,945.50		29,207.00
292 Health Savings Accounts	2,450.00	490.00		2,940.00
<b>Total Personnel Services – Employee Benefits</b>	<b>\$59,252.39</b>	<b>\$17,277.80</b>		<b>\$76,530.19</b>
<b>300 Purchased Professional and Technical Services</b>				
340 Technical Services	1,360.58	1,360.57		2,721.15
<b>Total Purchased Professional and Technical Services</b>	<b>\$1,360.58</b>	<b>\$1,360.57</b>		<b>\$2,721.15</b>
<b>600 Supplies</b>				
610 General Supplies	1,366.81	1,673.83		3,040.64
640 Books and Periodicals	4,169.27	4,805.87		8,975.14
<b>Total Supplies</b>	<b>\$5,536.08</b>	<b>\$6,479.70</b>		<b>\$12,015.78</b>
<b>Total 2250 School Library Services</b>	<b>\$141,045.72</b>	<b>\$55,458.15</b>		<b>\$196,503.87</b>

**General Fund (10)**

	<u>Elementary</u>	<u>Secondary</u>	<u>Federal</u>	<u>Total</u>
<b>2260 Instruction and Curriculum Development Services</b>				
<b>100 Personnel Services – Salaries</b>				
100 Personnel Services – Salaries	24,020.25	19,020.25	4,345.00	47,385.50
<b>Total Personnel Services – Salaries</b>	<b>\$24,020.25</b>	<b>\$19,020.25</b>	<b>\$4,345.00</b>	<b>\$47,385.50</b>
<b>200 Personnel Services – Employee Benefits</b>				
210 Group Insurance – Contracted Provider	37.51	37.49		75.00
220 Social Security Contributions	1,829.10	1,448.36	330.22	3,607.68
230 PSERS Retirement Contributions	8,289.39	6,563.88	1,499.46	16,352.73
260 Workers' Compensation	165.72	131.24	29.98	326.94
270 Group Insurance – Self-Insurance	5,112.50	5,112.50		10,225.00
<b>Total Personnel Services – Employee Benefits</b>	<b>\$15,434.22</b>	<b>\$13,293.47</b>	<b>\$1,859.66</b>	<b>\$30,587.35</b>
<b>600 Supplies</b>				
610 General Supplies	731.24	731.25		1,462.49
<b>Total Supplies</b>	<b>\$731.24</b>	<b>\$731.25</b>		<b>\$1,462.49</b>
<b>Total 2260 Instruction and Curriculum Development Services</b>	<b>\$40,185.71</b>	<b>\$33,044.97</b>	<b>\$6,204.66</b>	<b>\$79,435.34</b>

**General Fund (10)**

2270 Instructional Staff Professional Development Services	<u>Elementary</u>	<u>Secondary</u>	<u>Federal</u>	<u>Total</u>
<b>100 Personnel Services – Salaries</b>				
100 Personnel Services – Salaries		4,200.00		4,200.00
<b>Total Personnel Services – Salaries</b>		<b>\$4,200.00</b>		<b>\$4,200.00</b>
<b>200 Personnel Services – Employee Benefits</b>				
220 Social Security Contributions		315.22		315.22
230 PSERS Retirement Contributions		2,260.40		2,260.40
240 Tuition Reimbursement	4,252.43	16,588.70		20,841.13
260 Workers' Compensation		45.20		45.20
<b>Total Personnel Services – Employee Benefits</b>	<b>\$4,252.43</b>	<b>\$19,209.52</b>		<b>\$23,461.95</b>
<b>300 Purchased Professional and Technical Services</b>				
323 Professional Educational Services – Other Educational Agencies	1,283.40	1,676.70		2,960.10
329 Professional Educational Services – Other	2,200.11	2,924.93		5,125.04
<b>Total Purchased Professional and Technical Services</b>	<b>\$3,483.51</b>	<b>\$4,601.63</b>		<b>\$8,085.14</b>
<b>500 Other Purchased Services</b>				
580 Travel	1,490.00	1,490.00		2,980.00
<b>Total Other Purchased Services</b>	<b>\$1,490.00</b>	<b>\$1,490.00</b>		<b>\$2,980.00</b>
<b>600 Supplies</b>				
610 General Supplies	593.48	9,836.14		10,429.62
<b>Total Supplies</b>	<b>\$593.48</b>	<b>\$9,836.14</b>		<b>\$10,429.62</b>
<b>Total 2270 Instructional Staff Professional Development Services</b>	<b>\$9,819.42</b>	<b>\$39,337.29</b>		<b>\$49,156.71</b>

**General Fund (10)**

**2300 Support Services – Administration**

	<u>Elementary</u>	<u>Secondary</u>	<u>Federal</u>	<u>Total</u>
<b>100 Personnel Services – Salaries</b>				
100 Personnel Services – Salaries	228,008.33	305,849.28		745,203.40
<b>Total Personnel Services – Salaries</b>	<b>\$228,008.33</b>	<b>\$305,849.28</b>		<b>\$745,203.40</b>
<b>200 Personnel Services – Employee Benefits</b>				
210 Group Insurance – Contracted Provider	456.73	718.90		1,993.88
220 Social Security Contributions	17,252.48	23,214.53		55,377.76
230 PSERS Retirement Contributions	77,475.70	105,165.16		235,717.92
260 Workers' Compensation	1,586.08	2,121.87		5,166.27
270 Group Insurance – Self-Insurance	78,157.26	58,229.74		178,333.00
292 Health Savings Accounts	5,488.00	5,292.00		14,700.00
<b>Total Personnel Services – Employee Benefits</b>	<b>\$180,416.25</b>	<b>\$194,742.20</b>		<b>\$491,288.83</b>
<b>300 Purchased Professional and Technical Services</b>				
330 Other Professional Services				22,988.00
<b>Total Purchased Professional and Technical Services</b>				<b>\$22,988.00</b>
<b>400 Purchased Property Services</b>				
440 Rentals				3,000.00
<b>Total Purchased Property Services</b>				<b>\$3,000.00</b>
<b>500 Other Purchased Services</b>				
520 Insurance – General				1,550.75
549 Other Advertising/Public Relations				8,020.18
550 Printing and Binding	336.00			1,322.96
591 Services Purchased Locally				603.76
<b>Total Other Purchased Services</b>	<b>\$336.00</b>			<b>\$11,497.65</b>
<b>600 Supplies</b>				
610 General Supplies	8,398.46	19,071.14		53,398.46
<b>Total Supplies</b>	<b>\$8,398.46</b>	<b>\$19,071.14</b>		<b>\$53,398.46</b>
<b>800 Other Objects</b>				
810 Dues and Fees		1,190.00		10,057.97
<b>Total Other Objects</b>		<b>\$1,190.00</b>		<b>\$10,057.97</b>
<b>Total 2300 Support Services – Administration</b>	<b>\$417,159.04</b>	<b>\$520,852.62</b>		<b>\$1,337,434.31</b>

General Fund (10)

2310 Board Services

Elementary

Secondary

Federal

Total

500 Other Purchased Services

520 Insurance – General

793.75

549 Other Advertising/Public Relations

8,020.18

591 Services Purchased Locally

603.76

**Total Other Purchased Services**

**\$9,417.69**

600 Supplies

610 General Supplies

12,628.35

**Total Supplies**

**\$12,628.35**

800 Other Objects

810 Dues and Fees

6,230.04

**Total Other Objects**

**\$6,230.04**

**Total 2310 Board Services**

**\$28,276.08**



General Fund (10)

	<u>Elementary</u>	<u>Secondary</u>	<u>Federal</u>	<u>Total</u>
<b>2330 Tax Assessment and Collection Services</b>				
<b>100 Personnel Services – Salaries</b>				
100 Personnel Services – Salaries				28,135.03
<b>Total Personnel Services – Salaries</b>				<b>\$28,135.03</b>
<b>200 Personnel Services – Employee Benefits</b>				
220 Social Security Contributions				2,152.43
260 Workers' Compensation				194.14
<b>Total Personnel Services – Employee Benefits</b>				<b>\$2,346.57</b>
<b>500 Other Purchased Services</b>				
520 Insurance – General				757.00
<b>Total Other Purchased Services</b>				<b>\$757.00</b>
<b>600 Supplies</b>				
610 General Supplies				8,221.24
<b>Total Supplies</b>				<b>\$8,221.24</b>
<b>Total 2330 Tax Assessment and Collection Services</b>				<b>\$39,459.84</b>

General Fund (10)

2350 Legal and Accounting Services

Elementary

Secondary

Federal

Total

300 Purchased Professional and Technical Services

330 Other Professional Services

22,988.00

**Total Purchased Professional and Technical Services**

**\$22,988.00**

**Total 2350 Legal and Accounting Services**

**\$22,988.00**

**General Fund (10)**

	<u>Elementary</u>	<u>Secondary</u>	<u>Federal</u>	<u>Total</u>
<b>2360 Office of the Superintendent / Executive Director Services</b>				
<b>100 Personnel Services – Salaries</b>				
100 Personnel Services – Salaries				183,210.76
<b>Total Personnel Services – Salaries</b>				<b>\$183,210.76</b>
<b>200 Personnel Services – Employee Benefits</b>				
210 Group Insurance – Contracted Provider				818.25
220 Social Security Contributions				12,758.32
230 PSERS Retirement Contributions				53,077.06
260 Workers' Compensation				1,264.18
270 Group Insurance – Self-Insurance				41,946.00
292 Health Savings Accounts				3,920.00
<b>Total Personnel Services – Employee Benefits</b>				<b>\$113,783.81</b>
<b>400 Purchased Property Services</b>				
440 Rentals				3,000.00
<b>Total Purchased Property Services</b>				<b>\$3,000.00</b>
<b>500 Other Purchased Services</b>				
550 Printing and Binding				986.96
<b>Total Other Purchased Services</b>				<b>\$986.96</b>
<b>600 Supplies</b>				
610 General Supplies				5,079.27
<b>Total Supplies</b>				<b>\$5,079.27</b>
<b>800 Other Objects</b>				
810 Dues and Fees				2,637.93
<b>Total Other Objects</b>				<b>\$2,637.93</b>
<b>Total 2360 Office of the Superintendent / Executive Director Services</b>				<b>\$308,698.73</b>

**General Fund (10)**

**2380 Office of the Principal Services**

**100 Personnel Services – Salaries**

	<u>Elementary</u>	<u>Secondary</u>	<u>Federal</u>	<u>Total</u>
100 Personnel Services – Salaries	228,008.33	305,849.28		533,857.61
<b>Total Personnel Services – Salaries</b>	<b>\$228,008.33</b>	<b>\$305,849.28</b>		<b>\$533,857.61</b>

**200 Personnel Services – Employee Benefits**

210 Group Insurance – Contracted Provider	456.73	718.90		1,175.63
220 Social Security Contributions	17,252.48	23,214.53		40,467.01
230 PSERS Retirement Contributions	77,475.70	105,165.16		182,640.86
260 Workers' Compensation	1,586.08	2,121.87		3,707.95
270 Group Insurance – Self-Insurance	78,157.26	58,229.74		136,387.00
292 Health Savings Accounts	5,488.00	5,292.00		10,780.00
<b>Total Personnel Services – Employee Benefits</b>	<b>\$180,416.25</b>	<b>\$194,742.20</b>		<b>\$375,158.45</b>

**500 Other Purchased Services**

550 Printing and Binding	336.00			336.00
<b>Total Other Purchased Services</b>	<b>\$336.00</b>			<b>\$336.00</b>

**600 Supplies**

610 General Supplies	8,398.46	19,071.14		27,469.60
<b>Total Supplies</b>	<b>\$8,398.46</b>	<b>\$19,071.14</b>		<b>\$27,469.60</b>

**800 Other Objects**

810 Dues and Fees		1,190.00		1,190.00
<b>Total Other Objects</b>		<b>\$1,190.00</b>		<b>\$1,190.00</b>

**Total 2380 Office of the Principal Services**

	<b>\$417,159.04</b>	<b>\$520,852.62</b>		<b>\$938,011.66</b>
--	---------------------	---------------------	--	---------------------

**General Fund (10)**

	<u>Elementary</u>	<u>Secondary</u>	<u>Federal</u>	<u>Total</u>
<b>2400 Support Services – Pupil Health</b>				
<b>100 Personnel Services – Salaries</b>				
100 Personnel Services – Salaries				101,101.26
<b>Total Personnel Services – Salaries</b>				<b>\$101,101.26</b>
<b>200 Personnel Services – Employee Benefits</b>				
210 Group Insurance – Contracted Provider				67.56
220 Social Security Contributions				7,734.27
230 PSERS Retirement Contributions				34,110.55
260 Workers' Compensation				694.78
270 Group Insurance – Self-Insurance				21,652.00
292 Health Savings Accounts				1,960.00
<b>Total Personnel Services – Employee Benefits</b>				<b>\$66,219.16</b>
<b>300 Purchased Professional and Technical Services</b>				
330 Other Professional Services				7,999.92
<b>Total Purchased Professional and Technical Services</b>				<b>\$7,999.92</b>
<b>600 Supplies</b>				
610 General Supplies			3,095.26	11,463.15
<b>Total Supplies</b>			<b>\$3,095.26</b>	<b>\$11,463.15</b>
<b>Total 2400 Support Services – Pupil Health</b>			<b>\$3,095.26</b>	<b>\$186,783.49</b>

General Fund (10)

2430 Dental Services

Elementary

Secondary

Federal

Total

600 Supplies

610 General Supplies

3,396.48

**Total Supplies**

**\$3,396.48**

**Total 2430 Dental Services**

**\$3,396.48**

**General Fund (10)**

**2440 Nursing Services**

	<u>Elementary</u>	<u>Secondary</u>	<u>Federal</u>	<u>Total</u>
<b>100 Personnel Services – Salaries</b>				
100 Personnel Services – Salaries				101,101.26
<b>Total Personnel Services – Salaries</b>				<b>\$101,101.26</b>
<b>200 Personnel Services – Employee Benefits</b>				
210 Group Insurance – Contracted Provider				67.56
220 Social Security Contributions				7,734.27
230 PSERS Retirement Contributions				34,110.55
260 Workers' Compensation				694.78
270 Group Insurance – Self-Insurance				21,652.00
292 Health Savings Accounts				1,960.00
<b>Total Personnel Services – Employee Benefits</b>				<b>\$66,219.16</b>
<b>300 Purchased Professional and Technical Services</b>				
330 Other Professional Services				7,999.92
<b>Total Purchased Professional and Technical Services</b>				<b>\$7,999.92</b>
<b>600 Supplies</b>				
610 General Supplies			3,095.26	8,066.67
<b>Total Supplies</b>			<b>\$3,095.26</b>	<b>\$8,066.67</b>
<b>Total 2440 Nursing Services</b>			<b>\$3,095.26</b>	<b>\$183,387.01</b>

**General Fund (10)**

	<u>Elementary</u>	<u>Secondary</u>	<u>Federal</u>	<u>Total</u>
<b>2500 Support Services – Business</b>				
<b>100 Personnel Services – Salaries</b>				
100 Personnel Services – Salaries				88,606.62
<b>Total Personnel Services – Salaries</b>				<b>\$88,606.62</b>
<b>200 Personnel Services – Employee Benefits</b>				
210 Group Insurance – Contracted Provider				135.12
220 Social Security Contributions				6,479.41
230 PSERS Retirement Contributions				30,578.10
260 Workers' Compensation				611.32
270 Group Insurance – Self-Insurance				53,586.00
292 Health Savings Accounts				3,920.00
<b>Total Personnel Services – Employee Benefits</b>				<b>\$95,309.95</b>
<b>300 Purchased Professional and Technical Services</b>				
330 Other Professional Services				106,489.20
340 Technical Services				13,674.85
<b>Total Purchased Professional and Technical Services</b>				<b>\$120,164.05</b>
<b>500 Other Purchased Services</b>				
580 Travel				224.13
<b>Total Other Purchased Services</b>				<b>\$224.13</b>
<b>600 Supplies</b>				
610 General Supplies				5,073.75
<b>Total Supplies</b>				<b>\$5,073.75</b>
<b>800 Other Objects</b>				
810 Dues and Fees				2,232.38
<b>Total Other Objects</b>				<b>\$2,232.38</b>
<b>Total 2500 Support Services – Business</b>				<b>\$311,610.88</b>



**General Fund (10)**

	<u>Elementary</u>	<u>Secondary</u>	<u>Federal</u>	<u>Total</u>
<b>2510 Fiscal Services</b>				
<b>100 <u>Personnel Services – Salaries</u></b>				
100 Personnel Services – Salaries				82,626.20
<b>Total Personnel Services – Salaries</b>				<b>\$82,626.20</b>
<b>200 <u>Personnel Services – Employee Benefits</u></b>				
210 Group Insurance – Contracted Provider				124.92
220 Social Security Contributions				6,021.85
230 PSERS Retirement Contributions				28,514.23
260 Workers' Compensation				570.04
270 Group Insurance – Self-Insurance				50,518.50
292 Health Savings Accounts				3,626.00
<b>Total Personnel Services – Employee Benefits</b>				<b>\$89,375.54</b>
<b>300 <u>Purchased Professional and Technical Services</u></b>				
330 Other Professional Services				106,489.20
340 Technical Services				13,674.85
<b>Total Purchased Professional and Technical Services</b>				<b>\$120,164.05</b>
<b>500 <u>Other Purchased Services</u></b>				
580 Travel				224.13
<b>Total Other Purchased Services</b>				<b>\$224.13</b>
<b>600 <u>Supplies</u></b>				
610 General Supplies				5,073.75
<b>Total Supplies</b>				<b>\$5,073.75</b>
<b>800 <u>Other Objects</u></b>				
810 Dues and Fees				2,232.38
<b>Total Other Objects</b>				<b>\$2,232.38</b>
<b>Total 2510 Fiscal Services</b>				<b>\$299,696.05</b>

General Fund (10)

2511 Supervision of Fiscal Services - Head of Component

Elementary

Secondary

Federal

Total

200 Personnel Services – Employee Benefits

270 Group Insurance – Self-Insurance

12,686.00

**Total Personnel Services – Employee Benefits**

**\$12,686.00**

300 Purchased Professional and Technical Services

330 Other Professional Services

106,489.20

340 Technical Services

13,674.85

**Total Purchased Professional and Technical Services**

**\$120,164.05**

500 Other Purchased Services

580 Travel

224.13

**Total Other Purchased Services**

**\$224.13**

600 Supplies

610 General Supplies

5,073.75

**Total Supplies**

**\$5,073.75**

800 Other Objects

810 Dues and Fees

2,232.38

**Total Other Objects**

**\$2,232.38**

**Total 2511 Supervision of Fiscal Services - Head of Component**

**\$140,380.31**

General Fund (10)

2513 Receiving and Disbursing Funds Services

Elementary

Secondary

Federal

Total

100 Personnel Services – Salaries

100 Personnel Services – Salaries

34,775.69

**Total Personnel Services – Salaries**

**\$34,775.69**

200 Personnel Services – Employee Benefits

210 Group Insurance – Contracted Provider

57.36

220 Social Security Contributions

2,630.51

230 PSERS Retirement Contributions

12,001.06

260 Workers' Compensation

239.92

270 Group Insurance – Self-Insurance

17,382.50

292 Health Savings Accounts

1,666.00

**Total Personnel Services – Employee Benefits**

**\$33,977.35**

**Total 2513 Receiving and Disbursing Funds Services**

**\$68,753.04**

General Fund (10)

2514 Payroll Services

Elementary

Secondary

Federal

Total

100 Personnel Services – Salaries

100 Personnel Services – Salaries

43,863.63

**Total Personnel Services – Salaries**

**\$43,863.63**

200 Personnel Services – Employee Benefits

210 Group Insurance – Contracted Provider

60.84

220 Social Security Contributions

3,086.42

230 PSERS Retirement Contributions

15,137.36

260 Workers' Compensation

302.64

270 Group Insurance – Self-Insurance

18,405.00

292 Health Savings Accounts

1,764.00

**Total Personnel Services – Employee Benefits**

**\$38,756.26**

**Total 2514 Payroll Services**

**\$82,619.89**

General Fund (10)

2517 Property Accounting Services

Elementary

Secondary

Federal

Total

100 Personnel Services – Salaries

100 Personnel Services – Salaries

3,986.88

**Total Personnel Services – Salaries**

**\$3,986.88**

200 Personnel Services – Employee Benefits

210 Group Insurance – Contracted Provider

6.72

220 Social Security Contributions

304.92

230 PSERS Retirement Contributions

1,375.81

260 Workers' Compensation

27.48

270 Group Insurance – Self-Insurance

2,045.00

292 Health Savings Accounts

196.00

**Total Personnel Services – Employee Benefits**

**\$3,955.93**

**Total 2517 Property Accounting Services**

**\$7,942.81**

LEA : 127042853 Freedom Area SD

Printed 1/19/2022 1:40:36 PM

General Fund (10)

2520 Purchasing Services

Elementary

Secondary

Federal

Total

100 Personnel Services – Salaries

100 Personnel Services – Salaries

5,980.42

**Total Personnel Services – Salaries**

**\$5,980.42**

200 Personnel Services – Employee Benefits

210 Group Insurance – Contracted Provider

10.20

220 Social Security Contributions

457.56

230 PSERS Retirement Contributions

2,063.87

260 Workers' Compensation

41.28

270 Group Insurance – Self-Insurance

3,067.50

292 Health Savings Accounts

294.00

**Total Personnel Services – Employee Benefits**

**\$5,934.41**

**Total 2520 Purchasing Services**

**\$11,914.83**



General Fund (10)

2610 Supervision of Operation and Maintenance of Plant Services

Elementary

Secondary

Federal

Total

100 Personnel Services – Salaries

100 Personnel Services – Salaries

82,852.75

**Total Personnel Services – Salaries**

**\$82,852.75**

200 Personnel Services – Employee Benefits

210 Group Insurance – Contracted Provider

224.58

220 Social Security Contributions

6,073.43

230 PSERS Retirement Contributions

28,592.50

260 Workers' Compensation

571.68

270 Group Insurance – Self-Insurance

20,450.00

292 Health Savings Accounts

1,960.00

**Total Personnel Services – Employee Benefits**

**\$57,872.19**

**Total 2610 Supervision of Operation and Maintenance of Plant Services**

**\$140,724.94**



General Fund (10)

2611 Supervision of Operation and Maintenance of Plant Services – Head of Component

Elementary

Secondary

Federal

Total

100 Personnel Services – Salaries

100 Personnel Services – Salaries

82,852.75

**Total Personnel Services – Salaries**

**\$82,852.75**

200 Personnel Services – Employee Benefits

210 Group Insurance – Contracted Provider

224.58

220 Social Security Contributions

6,073.43

230 PSERS Retirement Contributions

28,592.50

260 Workers' Compensation

571.68

270 Group Insurance – Self-Insurance

20,450.00

292 Health Savings Accounts

1,960.00

**Total Personnel Services – Employee Benefits**

**\$57,872.19**

**Total 2611 Supervision of Operation and Maintenance of Plant Services – Head of Component**

**\$140,724.94**

**General Fund (10)**

	<u>Elementary</u>	<u>Secondary</u>	<u>Federal</u>	<u>Total</u>
<b>2620 Operation of Buildings Services</b>				
<b>100 Personnel Services – Salaries</b>				
100 Personnel Services – Salaries				678,795.27
<b>Total Personnel Services – Salaries</b>				<b>\$678,795.27</b>
<b>200 Personnel Services – Employee Benefits</b>				
210 Group Insurance – Contracted Provider				580.56
220 Social Security Contributions				50,492.27
230 PSERS Retirement Contributions				222,039.63
260 Workers' Compensation				4,685.89
270 Group Insurance – Self-Insurance				163,012.00
292 Health Savings Accounts				14,700.00
<b>Total Personnel Services – Employee Benefits</b>				<b>\$455,510.35</b>
<b>300 Purchased Professional and Technical Services</b>				
340 Technical Services				102.74
<b>Total Purchased Professional and Technical Services</b>				<b>\$102.74</b>
<b>400 Purchased Property Services</b>				
410 Cleaning Services				13,855.68
420 Utility Services				24,932.53
430 Repairs and Maintenance Services				126,283.52
<b>Total Purchased Property Services</b>				<b>\$165,071.73</b>
<b>500 Other Purchased Services</b>				
523 General Property and Liability Insurance				68,824.00
530 Communications				31,870.56
<b>Total Other Purchased Services</b>				<b>\$100,694.56</b>
<b>600 Supplies</b>				
610 General Supplies	55,764.72	55,764.73	71,320.01	182,849.46
620 Energy				335,133.68
<b>Total Supplies</b>	<b>\$55,764.72</b>	<b>\$55,764.73</b>	<b>\$71,320.01</b>	<b>\$517,983.14</b>
<b>700 Property</b>				
752 Capital Equipment – Original and Additional				36,658.00
<b>Total Property</b>				<b>\$36,658.00</b>
<b>Total 2620 Operation of Buildings Services</b>	<b>\$55,764.72</b>	<b>\$55,764.73</b>	<b>\$71,320.01</b>	<b>\$1,954,815.79</b>

General Fund (10)

	<u>Elementary</u>	<u>Secondary</u>	<u>Federal</u>	<u>Total</u>
<b>2660 Safety and Security Services</b>				
<b>100 Personnel Services – Salaries</b>				
100 Personnel Services – Salaries				6,352.50
<b>Total Personnel Services – Salaries</b>				<b>\$6,352.50</b>
<b>200 Personnel Services – Employee Benefits</b>				
220 Social Security Contributions				485.98
230 PSERS Retirement Contributions				2,192.25
260 Workers' Compensation				43.84
<b>Total Personnel Services – Employee Benefits</b>				<b>\$2,722.07</b>
<b>300 Purchased Professional and Technical Services</b>				
350 Security / Safety Services				80,334.36
<b>Total Purchased Professional and Technical Services</b>				<b>\$80,334.36</b>
<b>Total 2660 Safety and Security Services</b>				<b>\$89,408.93</b>

General Fund (10)

	<u>Elementary</u>	<u>Secondary</u>	<u>Federal</u>	<u>Total</u>
<b>2700 Student Transportation Services</b>				
<b>300 <u>Purchased Professional and Technical Services</u></b>				
340 Technical Services				5,400.00
<b>Total Purchased Professional and Technical Services</b>				<b>\$5,400.00</b>
<b>500 <u>Other Purchased Services</u></b>				
513 Contracted Carriers				1,001,450.77
516 Student Transportation Services From the IU				7,645.11
<b>Total Other Purchased Services</b>				<b>\$1,009,095.88</b>
<b>Total 2700 Student Transportation Services</b>				<b>\$1,014,495.88</b>

General Fund (10)

2720 Vehicle Operation Services

Elementary

Secondary

Federal

Total

300 Purchased Professional and Technical Services

340 Technical Services

5,400.00

**Total Purchased Professional and Technical Services**

**\$5,400.00**

500 Other Purchased Services

513 Contracted Carriers

917,656.24

516 Student Transportation Services From the IU

7,645.11

**Total Other Purchased Services**

**\$925,301.35**

**Total 2720 Vehicle Operation Services**

**\$930,701.35**

General Fund (10)

2750 Nonpublic Transportation

Elementary

Secondary

Federal

Total

500 Other Purchased Services

513 Contracted Carriers

83,794.53

**Total Other Purchased Services**

**\$83,794.53**

**Total 2750 Nonpublic Transportation**

**\$83,794.53**

**General Fund (10)**

	<u>Elementary</u>	<u>Secondary</u>	<u>Federal</u>	<u>Total</u>
<b>2800 Support Services – Central</b>				
<b>100 Personnel Services – Salaries</b>				
100 Personnel Services – Salaries				135,776.11
<b>Total Personnel Services – Salaries</b>				<b>\$135,776.11</b>
<b>200 Personnel Services – Employee Benefits</b>				
210 Group Insurance – Contracted Provider				297.00
220 Social Security Contributions				10,071.24
230 PSERS Retirement Contributions				44,210.72
260 Workers' Compensation				936.81
270 Group Insurance – Self-Insurance				43,304.00
292 Health Savings Accounts				3,920.00
<b>Total Personnel Services – Employee Benefits</b>				<b>\$102,739.77</b>
<b>300 Purchased Professional and Technical Services</b>				
329 Professional Educational Services – Other				21,486.99
340 Technical Services				35,846.26
<b>Total Purchased Professional and Technical Services</b>				<b>\$57,333.25</b>
<b>400 Purchased Property Services</b>				
440 Rentals				37,985.79
<b>Total Purchased Property Services</b>				<b>\$37,985.79</b>
<b>500 Other Purchased Services</b>				
530 Communications				2,000.00
580 Travel				100.00
<b>Total Other Purchased Services</b>				<b>\$2,100.00</b>
<b>600 Supplies</b>				
610 General Supplies				40,515.37
650 Supplies & Fees – Technology Related				10,655.10
<b>Total Supplies</b>				<b>\$51,170.47</b>
<b>800 Other Objects</b>				
810 Dues and Fees				255.85
<b>Total Other Objects</b>				<b>\$255.85</b>
<b>Total 2800 Support Services – Central</b>				<b>\$387,361.24</b>

**General Fund (10)**

	<u>Elementary</u>	<u>Secondary</u>	<u>Federal</u>	<u>Total</u>
<b>2810 Planning, Research, Development and Evaluation Services</b>				
<b>100 <u>Personnel Services – Salaries</u></b>				
100 Personnel Services – Salaries				135,776.11
<b>Total Personnel Services – Salaries</b>				<b>\$135,776.11</b>
<b>200 <u>Personnel Services – Employee Benefits</u></b>				
210 Group Insurance – Contracted Provider				297.00
220 Social Security Contributions				10,071.24
230 PSERS Retirement Contributions				44,210.72
260 Workers' Compensation				936.81
270 Group Insurance – Self-Insurance				43,304.00
292 Health Savings Accounts				3,920.00
<b>Total Personnel Services – Employee Benefits</b>				<b>\$102,739.77</b>
<b>300 <u>Purchased Professional and Technical Services</u></b>				
329 Professional Educational Services – Other				21,486.99
340 Technical Services				35,846.26
<b>Total Purchased Professional and Technical Services</b>				<b>\$57,333.25</b>
<b>400 <u>Purchased Property Services</u></b>				
440 Rentals				37,985.79
<b>Total Purchased Property Services</b>				<b>\$37,985.79</b>
<b>500 <u>Other Purchased Services</u></b>				
530 Communications				2,000.00
<b>Total Other Purchased Services</b>				<b>\$2,000.00</b>
<b>600 <u>Supplies</u></b>				
610 General Supplies				40,515.37
650 Supplies & Fees – Technology Related				10,655.10
<b>Total Supplies</b>				<b>\$51,170.47</b>
<b>800 <u>Other Objects</u></b>				
810 Dues and Fees				255.85
<b>Total Other Objects</b>				<b>\$255.85</b>
<b>Total 2810 Planning, Research, Development and Evaluation Services</b>				<b>\$387,261.24</b>



General Fund (10)

2830 Staff Services

Elementary

Secondary

Federal

Total

500 Other Purchased Services

580 Travel

100.00

**Total Other Purchased Services**

**\$100.00**

**Total 2830 Staff Services**

**\$100.00**

General Fund (10)

	<u>Elementary</u>	<u>Secondary</u>	<u>Federal</u>	<u>Total</u>
2834 Staff Development Services – Non-Instructional, Certified Staff Only				
500 <u>Other Purchased Services</u>				
580 Travel				100.00
<b>Total Other Purchased Services</b>				<b>\$100.00</b>
<b>Total 2834 Staff Development Services – Non-Instructional, Certified Staff Only</b>				<b>\$100.00</b>

General Fund (10)

2900 Other Support Services

Elementary

Secondary

Federal

Total

500 Other Purchased Services

595 IU Payments By Withholding

11,993.04

**Total Other Purchased Services**

**\$11,993.04**

**Total 2900 Other Support Services**

**\$11,993.04**

General Fund (10)

2910 Support Services Not Listed Elsewhere In the 2000 Series

Elementary

Secondary

Federal

Total

500 Other Purchased Services

595 IU Payments By Withholding

11,993.04

**Total Other Purchased Services**

**\$11,993.04**

**Total 2910 Support Services Not Listed Elsewhere In the 2000 Series**

**\$11,993.04**

LEA : 127042853 Freedom Area SD

Printed 1/19/2022 1:40:46 PM

**General Fund (10)**

**3000 Operation of Non-Instructional Services**

**Total**

**100 Personnel Services – Salaries**

100 Personnel Services – Salaries 260,807.00

**Total Personnel Services – Salaries \$260,807.00**

**200 Personnel Services – Employee Benefits**

220 Social Security Contributions 19,773.02

230 PSERS Retirement Contributions 56,207.64

260 Workers' Compensation 1,799.70

**Total Personnel Services – Employee Benefits \$77,780.36**

**300 Purchased Professional and Technical Services**

329 Professional Educational Services – Other 150.00

330 Other Professional Services 22,000.00

340 Technical Services 16,669.00

350 Security / Safety Services 3,102.00

**Total Purchased Professional and Technical Services \$41,921.00**

**400 Purchased Property Services**

430 Repairs and Maintenance Services 8,227.01

**Total Purchased Property Services \$8,227.01**

**500 Other Purchased Services**

510 Student Transportation Services 32,800.80

520 Insurance – General 10,250.00

580 Travel 2,165.84

591 Services Purchased Locally 3,400.00

**Total Other Purchased Services \$48,616.64**

**600 Supplies**

610 General Supplies 83,441.00

**Total Supplies \$83,441.00**

**700 Property**

752 Capital Equipment – Original and Additional 8,900.00

**Total Property \$8,900.00**

**800 Other Objects**

810 Dues and Fees 15,150.86

860 Grants To Municipal and Community Service Organizations 48.00

**Total Other Objects \$15,198.86**

**Total 3000 Operation of Non-Instructional Services \$544,891.87**



**General Fund (10)**

**3300 Community Services**

Elementary                      Secondary                      Federal                      Total

<b>100</b>	<b><u>Personnel Services – Salaries</u></b>			
	100 Personnel Services – Salaries			1,150.00
<b>Total Personnel Services – Salaries</b>				<b>\$1,150.00</b>
<b>200</b>	<b><u>Personnel Services – Employee Benefits</u></b>			
	220 Social Security Contributions			87.98
	260 Workers' Compensation			7.94
<b>Total Personnel Services – Employee Benefits</b>				<b>\$95.92</b>
<b>600</b>	<b><u>Supplies</u></b>			
	610 General Supplies		501.00	501.00
<b>Total Supplies</b>			<b>\$501.00</b>	<b>\$501.00</b>
<b>800</b>	<b><u>Other Objects</u></b>			
	860 Grants To Municipal and Community Service Organizations			48.00
<b>Total Other Objects</b>				<b>\$48.00</b>
<b>Total 3300 Community Services</b>			<b>\$501.00</b>	<b>\$1,794.92</b>

**General Fund (10)**

<b>4000 Facilities Acquisition, Construction and Improvement Services</b>	<u><b>Total</b></u>
<b>300 <u>Purchased Professional and Technical Services</u></b>	
330 Other Professional Services	3,181.73
<b>Total Purchased Professional and Technical Services</b>	<b>\$3,181.73</b>
<b>400 <u>Purchased Property Services</u></b>	
430 Repairs and Maintenance Services	3,330.00
440 Rentals	196.13
450 Construction Services	34,563.12
<b>Total Purchased Property Services</b>	<b>\$38,089.25</b>
<b>600 <u>Supplies</u></b>	
610 General Supplies	8,781.08
<b>Total Supplies</b>	<b>\$8,781.08</b>
<b>700 <u>Property</u></b>	
762 Capitalized Equipment - Replacement	10,189.96
<b>Total Property</b>	<b>\$10,189.96</b>
<b>Total 4000 Facilities Acquisition, Construction and Improvement Services</b>	<b>\$60,242.02</b>



General Fund (10)

	<u>Elementary</u>	<u>Secondary</u>	<u>Federal</u>	<u>Total</u>
<b>4200 Existing Site Improvement Services</b>				
<b>400 <u>Purchased Property Services</u></b>				
440 Rentals				196.13
450 Construction Services				8,220.00
<b>Total Purchased Property Services</b>				<b>\$8,416.13</b>
<b>600 <u>Supplies</u></b>				
610 General Supplies				3,742.48
<b>Total Supplies</b>				<b>\$3,742.48</b>
<b>Total 4200 Existing Site Improvement Services</b>				<b>\$12,158.61</b>

**General Fund (10)**

	<u>Elementary</u>	<u>Secondary</u>	<u>Federal</u>	<u>Total</u>
<b>4600 Existing Building Improvement Services</b>				
<b>300 <u>Purchased Professional and Technical Services</u></b>				
330 Other Professional Services				3,181.73
<b>Total Purchased Professional and Technical Services</b>				<b>\$3,181.73</b>
<b>400 <u>Purchased Property Services</u></b>				
430 Repairs and Maintenance Services				3,330.00
450 Construction Services				26,343.12
<b>Total Purchased Property Services</b>				<b>\$29,673.12</b>
<b>600 <u>Supplies</u></b>				
610 General Supplies				5,038.60
<b>Total Supplies</b>				<b>\$5,038.60</b>
<b>700 <u>Property</u></b>				
762 Capitalized Equipment - Replacement				10,189.96
<b>Total Property</b>				<b>\$10,189.96</b>
<b>Total 4600 Existing Building Improvement Services</b>				<b>\$48,083.41</b>

**General Fund (10)**

**5000 Other Expenditures and Financing Uses**

**Total**

**800 Other Objects**

830 Interest	302,547.50
880 Refunds of Prior Years' Receipts	10,054.00

<b>Total Other Objects</b>	<b>\$312,601.50</b>
----------------------------	---------------------

**900 Other Uses of Funds**

910 Redemption of Principal	425,000.00
939 Other Fund Transfers	750,000.00

<b>Total Other Uses of Funds</b>	<b>\$1,175,000.00</b>
----------------------------------	-----------------------

<b>Total 5000 Other Expenditures and Financing Uses</b>	<b>\$1,487,601.50</b>
---	-----------------------

General Fund (10)

5100 Debt Service / Other Expenditures and Financing Uses	<u>Elementary</u>	<u>Secondary</u>	<u>Federal</u>	<u>Total</u>
<b>800 Other Objects</b>				
830 Interest				302,547.50
880 Refunds of Prior Years' Receipts				10,054.00
<b>Total Other Objects</b>				<b>\$312,601.50</b>
<b>900 Other Uses of Funds</b>				
910 Redemption of Principal				425,000.00
<b>Total Other Uses of Funds</b>				<b>\$425,000.00</b>
<b>Total 5100 Debt Service / Other Expenditures and Financing Uses</b>				<b>\$737,601.50</b>

General Fund (10)

	<u>Elementary</u>	<u>Secondary</u>	<u>Federal</u>	<u>Total</u>
<b>5110 Debt Service</b>				
<b>800 Other Objects</b>				
830 Interest				302,547.50
<b>Total Other Objects</b>				<b>\$302,547.50</b>
<b>900 Other Uses of Funds</b>				
910 Redemption of Principal				425,000.00
<b>Total Other Uses of Funds</b>				<b>\$425,000.00</b>
<b>Total 5110 Debt Service</b>				<b>\$727,547.50</b>

General Fund (10)

	<u>Elementary</u>	<u>Secondary</u>	<u>Federal</u>	<u>Total</u>
5130 Refund of Prior Year Revenues / Receipts				
800 <u>Other Objects</u>				
880 Refunds of Prior Years' Receipts				10,054.00
<b>Total Other Objects</b>				<b>\$10,054.00</b>
<b>Total 5130 Refund of Prior Year Revenues / Receipts</b>				<b>\$10,054.00</b>

General Fund (10)

	<u>Elementary</u>	<u>Secondary</u>	<u>Federal</u>	<u>Total</u>
<b>5200 Interfund Transfers – Out</b>				
<b>900 <u>Other Uses of Funds</u></b>				
939 Other Fund Transfers				750,000.00
<b>Total Other Uses of Funds</b>				<b>\$750,000.00</b>
<b>Total 5200 Interfund Transfers – Out</b>				<b>\$750,000.00</b>

LEA : 127042853 Freedom Area SD

Printed 1/19/2022 1:41:11 PM

General Fund (10)

	<u>Elementary</u>	<u>Secondary</u>	<u>Federal</u>	<u>Total</u>
<b>5230 Capital Projects Fund Transfers</b>				
<b>900 Other Uses of Funds</b>				
939 Other Fund Transfers				750,000.00
<b>Total Other Uses of Funds</b>				<b>\$750,000.00</b>
<b>Total 5230 Capital Projects Fund Transfers</b>				<b>\$750,000.00</b>



**Other Capital Projects Fund (39)**

**4000 Facilities Acquisition, Construction and Improvement Services**

**Total**

**400 Purchased Property Services**

450 Construction Services

24,889.42

**Total Purchased Property Services**

**\$24,889.42**

**700 Property**

752 Capital Equipment – Original and Additional

17,348.68

**Total Property**

**\$17,348.68**

**Total 4000 Facilities Acquisition, Construction and Improvement Services**

**\$42,238.10**

**Other Capital Projects Fund (39)**

**4600 Existing Building Improvement Services**

Elementary

Secondary

Federal

Total

**400 Purchased Property Services**

450 Construction Services

24,889.42

**Total Purchased Property Services**

**\$24,889.42**

**700 Property**

752 Capital Equipment – Original and Additional

17,348.68

**Total Property**

**\$17,348.68**

**Total 4600 Existing Building Improvement Services**

**\$42,238.10**

	<u>General Fund(10)</u>	<u>Student Sponsored Activity Fund(21)</u>	<u>Public Purpose Trust(27)</u>	<u>Other Compt Approved (28)</u>	<u>Athletic / Activity(29)</u>
<b>1000 Instruction</b>					
1100 Regular Programs - Elementary / Secondary	11,069,648.07				
1200 Special Programs - Elementary / Secondary	3,914,197.58				
1300 Vocational Education	425,343.98				
1500 Nonpublic School Programs	11,679.00				
<b>Total Instruction</b>	<b>\$15,420,868.63</b>				
<b>2000 Support Services</b>					
2100 Support Services - Students	1,032,589.13				
2200 Support Services - Instructional Staff	325,095.92				
2300 Support Services - Administration	1,337,434.31				
2400 Support Services - Pupil Health	186,783.49				
2500 Support Services - Business	311,610.88				
2600 Operation and Maintenance of Plant Services	2,184,949.66				
2700 Student Transportation Services	1,014,495.88				
2800 Support Services - Central	387,361.24				
2900 Other Support Services	11,993.04				
<b>Total Support Services</b>	<b>\$6,792,313.55</b>				
<b>3000 Operation of Non-Instructional Services</b>					
3200 Student Activities	543,096.95				
3300 Community Services	1,794.92				
<b>Total Operation of Non-Instructional Services</b>	<b>\$544,891.87</b>				
<b>4000 Facilities Acquisition, Construction and Improvement Services</b>					
4200 Existing Site Improvement Services	12,158.61				
4600 Existing Building Improvement Services	48,083.41				
<b>Total Facilities Acquisition, Construction and Improvement Services</b>	<b>\$60,242.02</b>				
<b>5000 Other Expenditures and Financing Uses</b>					
5100 Debt Service / Other Expenditures and Financing Uses	737,601.50				
5200 Interfund Transfers - Out	750,000.00				
<b>Total Other Expenditures and Financing Uses</b>	<b>\$1,487,601.50</b>				
<b>TOTAL ACTUAL EXPENDITURES &amp; OTHER FINANCING USES</b>	<b>\$24,305,917.57</b>				

	<u>Capital Reserve (690.</u>	<u>Capital Reserve (1431)(32)</u>	<u>Other Capital Projects</u>	<u>Debt Service(40)</u>	<u>Permanent(90)</u>
	<u>1850)(31)</u>		<u>Fund(39)</u>		

- 1000 Instruction**
- 1100 Regular Programs - Elementary / Secondary
- 1200 Special Programs - Elementary / Secondary
- 1300 Vocational Education
- 1500 Nonpublic School Programs

**Total Instruction**

- 2000 Support Services**
- 2100 Support Services - Students
- 2200 Support Services - Instructional Staff
- 2300 Support Services - Administration
- 2400 Support Services - Pupil Health
- 2500 Support Services - Business
- 2600 Operation and Maintenance of Plant Services
- 2700 Student Transportation Services
- 2800 Support Services - Central
- 2900 Other Support Services

**Total Support Services**

- 3000 Operation of Non-Instructional Services**
- 3200 Student Activities
- 3300 Community Services

**Total Operation of Non-Instructional Services**

- 4000 Facilities Acquisition, Construction and Improvement Services**
- 4200 Existing Site Improvement Services
- 4600 Existing Building Improvement Services 42,238.10

**Total Facilities Acquisition, Construction and Improvement Services \$42,238.10**

- 5000 Other Expenditures and Financing Uses**
- 5100 Debt Service / Other Expenditures and Financing Uses
- 5200 Interfund Transfers - Out

**Total Other Expenditures and Financing Uses \$42,238.10**

**TOTAL ACTUAL EXPENDITURES & OTHER FINANCING USES \$42,238.10**

	<u>Total</u>
<b>1000 <u>Instruction</u></b>	
1100 Regular Programs - Elementary / Secondary	11,069,648.07
1200 Special Programs - Elementary / Secondary	3,914,197.58
1300 Vocational Education	425,343.98
1500 Nonpublic School Programs	11,679.00
<b>Total Instruction</b>	<b>\$15,420,868.63</b>
<b>2000 <u>Support Services</u></b>	
2100 Support Services - Students	1,032,589.13
2200 Support Services - Instructional Staff	325,095.92
2300 Support Services - Administration	1,337,434.31
2400 Support Services - Pupil Health	186,783.49
2500 Support Services - Business	311,610.88
2600 Operation and Maintenance of Plant Services	2,184,949.66
2700 Student Transportation Services	1,014,495.88
2800 Support Services - Central	387,361.24
2900 Other Support Services	11,993.04
<b>Total Support Services</b>	<b>\$6,792,313.55</b>
<b>3000 <u>Operation of Non-Instructional Services</u></b>	
3200 Student Activities	543,096.95
3300 Community Services	1,794.92
<b>Total Operation of Non-Instructional Services</b>	<b>\$544,891.87</b>
<b>4000 <u>Facilities Acquisition, Construction and Improvement Services</u></b>	
4200 Existing Site Improvement Services	12,158.61
4600 Existing Building Improvement Services	90,321.51
<b>Total Facilities Acquisition, Construction and Improvement Services</b>	<b>\$102,480.12</b>
<b>5000 <u>Other Expenditures and Financing Uses</u></b>	
5100 Debt Service / Other Expenditures and Financing Uses	737,601.50
5200 Interfund Transfers - Out	750,000.00
<b>Total Other Expenditures and Financing Uses</b>	<b>\$1,487,601.50</b>
<b>TOTAL ACTUAL EXPENDITURES &amp; OTHER FINANCING USES</b>	<b>\$24,348,155.67</b>

LEA : 127042853 Freedom Area SD

Printed 1/19/2022 1:41:55 PM

**PSERS Salary Data (Salary Data should relate to the General Fund only)**

<b>Amount Description</b>	<b>Amount</b>
Total Salary Base for salaries subject to PSERS withholding	9,160,315.00
Total Federally Funded salaries subject to PSERS withholding	433,374.00
	<hr/>

**Title I Expenditure Data**

<b>Amount Description</b>	<b>Amount</b>
Expenditures Funded with Current Title I Funds	300,484.00
Expenditures Funded with Carry over Title I Funds	
<b>Total Title I Expenditure Data</b>	<hr/> <b>\$300,484.00</b> <hr/>

**Title IV Revenue Data**

<b>Amount Description</b>	<b>Amount</b>
Revenue from Title IV-A-1: Student Support and Academic Enrichment Grants	22,804.00
Revenue from Title IV-B: 21st Century Community Learning Centers	
	<hr/>

**Title V Revenue Data**

<b>Amount Description</b>	<b>Amount</b>
Revenue from Title V-B-2: Rural and Low-Income School Programs	
Revenue from Title V-B-1: Small Rural School Achievement (Directly from the Federal Govt)	
	<hr/>

1 .	<u>Current Special Education Expenditures/Expenses within Functions 1000, 2000, 3100, and 3200</u>	5,505,218.00
2 .	<u>Current Special Education Expenditures for Instruction Functions 1000 and 3200</u>	3,609,109.00
3 .	<u>Current Special Education Expenditures for Pupil Support Services Function 2100</u>	417,462.00
4 .	<u>Current Special Education Expenditures for Instructional Staff Support Services Function 2200</u>	81,158.00
5 .	<u>Current Special Education Expenditures for Student Transportation Support Services Function 2700</u>	294,556.00

**Note:** Do not report total Special Education expenditures for the functions listed above. Refer to the AFR User Manual for specific instructions on Funds/Functions/Objects to be included and excluded on each line.

**Benefits for Staff Relative to Collective Bargaining Agreements**

	<b>OBJECT</b>	<b>COVERED</b>	<b>NOT COVERED</b>	<b>TOTAL</b>
<b>10 General Fund</b>				
	211 Medical Insurance			
	212 Dental Insurance			
	215 Eye Care Insurance		271.20	271.20
	216 Prescription Insurance			
	271 Self-Insurance Medical Benefits	1,992,009.66	403,428.00	2,395,437.66
	272 Self-Insurance Dental Benefits	74,866.00	14,982.00	89,848.00
	275 Self-Insurance Eye Care Benefits			
	276 Self-Insurance Prescription Benefits			
	<b>FUND TOTAL</b>	<b>\$2,066,875.66</b>	<b>\$418,681.20</b>	<b>\$2,485,556.86</b>
<b>50 Enterprise Fund</b>				
	211 Medical Insurance			
	212 Dental Insurance			
	215 Eye Care Insurance			
	216 Prescription Insurance			
	271 Self-Insurance Medical Benefits	42,796.41	10,332.00	53,128.41
	272 Self-Insurance Dental Benefits	1,779.00	468.00	2,247.00
	275 Self-Insurance Eye Care Benefits			
	276 Self-Insurance Prescription Benefits			
	<b>FUND TOTAL</b>	<b>\$44,575.41</b>	<b>\$10,800.00</b>	<b>\$55,375.41</b>
<b>60 Internal Service Fund</b>	<b>No Self Insurance data to report</b>			
	211 Medical Insurance			
	212 Dental Insurance			
	215 Eye Care Insurance			
	216 Prescription Insurance			
	271 Self-Insurance Medical Benefits			
	272 Self-Insurance Dental Benefits			
	275 Self-Insurance Eye Care Benefits			
	276 Self-Insurance Prescription Benefits			
	<b>FUND TOTAL</b>			
<b>Total of All Funds</b>		<b>\$2,111,451.07</b>	<b>\$429,481.20</b>	<b>\$2,540,932.27</b>



LEA : 127042853 Freedom Area SD

Printed 1/19/2022 1:42:15 PM

Function	Special Education (Prior Year)	Nonspecial Education (Prior Year)	Total (Prior Year)	Special Education (Current Year)	Nonspecial Education (Current Year)	Total (Current Year)
2120 Guidance Services	130,829.65	453,231.31	584,060.96	185,797.41	544,251.34	730,048.75
2140 Psychological Services	204,447.51		204,447.51	153,188.90		153,188.90
2150 Speech Pathology and Audiology Services						
2160 Social Work Services	54,280.00		54,280.00	54,280.00		54,280.00
2260 Instruction and Curriculum Development Services	33.61		33.61	20,216.29	59,219.05	79,435.34
2350 Legal and Accounting Services	10,965.32	14,203.26	25,168.58	5,850.45	17,137.55	22,988.00
2420 Medical Services						
2440 Nursing Services	42,348.84	150,145.90	192,494.74	46,671.99	136,715.02	183,387.01
2700 Student Transportation Services	486,920.67	649,806.25	1,136,726.92	294,556.00	712,295.00	1,006,851.00
<b>Total</b>	<b>\$929,825.60</b>	<b>\$1,267,386.72</b>	<b>\$2,197,212.32</b>	<b>\$760,561.04</b>	<b>\$1,469,617.96</b>	<b>\$2,230,179.00</b>

LEA : 127042853 Freedom Area SD

Printed 1/19/2022 1:42:26 PM

(PRINCIPAL AMOUNTS ONLY)

**GOVERNMENTAL FUNDS/ ACTIVITIES**

	Short-Term Borrowing	General Obligation Bonds/Notes	Authority Building Obligations	Other Long-Term Debt	Other Post-Employment Benefits (OPEB)	Compensated Absences	Net Pension Liability	Total
1. Debt at Beginning of Fiscal Year		10,560,000.00			5,269,991.00	118,147.00	31,076,817.00	47,024,955.00
2. Additional Debt Incurred During Year					264,731.00	15,374.00	214,541.00	494,646.00
3. Retirements and Repayments		425,000.00			40,362.00			465,362.00
4. Debt at End of Fiscal Year		10,135,000.00			5,494,360.00	133,521.00	31,291,358.00	47,054,239.00
5. Accreted Interest at End Of Fiscal Year								
6. Total Debt and Accreted Interest		10,135,000.00			5,494,360.00	133,521.00	31,291,358.00	47,054,239.00
7. Current Portion P&I - Due within 1 year		728,148.00				33,380.00		761,528.00
8. Interest Paid during current fiscal year		302,548.00						302,548.00

(PRINCIPAL AMOUNTS ONLY)

**PROPRIETARY FUNDS**

	Short-Term Borrowing	General Obligation Bonds/Notes	Authority Building Obligations	Other Long-Term Debt	Other Post-Employment Benefits (OPEB)	Compensated Absences	Net Pension Liability	Total
1. Debt at Beginning of Fiscal Year					41,933.00		922,184.00	964,117.00
2. Additional Debt Incurred During Year					2,362.00		87,459.00	89,821.00
3. Retirements and Repayments								
4. Debt at End of Fiscal Year					44,295.00		1,009,643.00	1,053,938.00
5. Accreted Interest at End Of Fiscal Year								
6. Total Debt and Accreted Interest					44,295.00		1,009,643.00	1,053,938.00
7. Current Portion P&I - Due within 1 year								
8. Interest Paid during current fiscal year								

**Total Principal and Interest Payments Made by Your School - All Funds**

Function	Fund		Principal (910)	Principal (920)	Interest (830)	Total (Principal +Interest)	Misc Other Uses (990)
5110	10	General Fund	425,000.00		302,547.50	727,547.50	
5110	20	Special Revenue Funds					
5110	30	Capital Projects Funds					
5110	40	Debt Service Fund					
5110	90	Permanent Fund					
5120	10	General Fund					
5120	20	Special Revenue Funds					
5120	30	Capital Projects Funds					
5120	40	Debt Service Fund					

<b>Total Debt Payments - Governmental Funds</b>			<b>\$425,000.00</b>		<b>\$302,547.50</b>	<b>\$727,547.50</b>	
---	--	--	---------------------	--	---------------------	---------------------	--

Function	Fund		Principal (910)	Principal (920)	Interest (830)	Total (Principal +Interest)
5110	50	Enterprise Fund				
5110	60	Internal Service Fund				
5120	50	Enterprise Fund				
5120	60	Internal Service Fund				

<b>Total Debt Payments - Proprietary Funds</b>						
--	--	--	--	--	--	--

**Debt Details**  
**Governmental Funds/ Activities**

Debt Category	Debt Issue Date (MM/YYYY)	Principal Amounts Only			Debt at End of Fiscal Year	Current Portion Due Within One Year (Principal and Interest)	Interest Paid During Fiscal Year
		Debt at Beginning of Fiscal Year	Additions	Reductions / Repayments			
General Obligation Bonds/Notes – CIB	09/2017	9,830,000.00		65,000.00	9,765,000.00	348,898.00	285,198.00
General Obligation Bonds/Notes – CIB	02/2014	730,000.00		360,000.00	370,000.00	379,250.00	17,350.00
Compensated Absences		118,147.00	15,374.00		133,521.00	33,380.00	
Other Post-Employment Benefits (OPEB)		5,269,991.00	264,731.00	40,362.00	5,494,360.00		
Net Pension Liability		31,076,817.00	214,541.00		31,291,358.00		
<b>Totals for Debt Entered:</b>		<b>\$47,024,955.00</b>	<b>\$494,646.00</b>	<b>\$465,362.00</b>	<b>\$47,054,239.00</b>	<b>\$761,528.00</b>	<b>\$302,548.00</b>

**Bond Details**  
**Proprietary Funds**

Debt Category	Debt Issue Date (MM/YYYY)	Principal Amounts Only			Debt at End of Fiscal Year	Current Portion Due Within One Year (Principal and Interest)	Interest Paid During Fiscal Year
		Debt at Beginning of Fiscal Year	Additions	Reductions / Repayments			
Other Post-Employment Benefits (OPEB)		41,933.00	2,362.00		44,295.00		
Net Pension Liability		922,184.00	87,459.00		1,009,643.00		
<b>Totals for Debt Entered:</b>		<b>\$964,117.00</b>	<b>\$89,821.00</b>		<b>\$1,053,938.00</b>		

**General Fund (10)**

**Section 1: Tuition/Purchased Services as Reported within Expenditure Detail**

	Amount
Tuition Reported in General Fund Expenditures 1000-560	2,751,282.77
Purchased Services in General Fund Expenditures 1000-594 and 1000-597	824.51
<b>Section 1 Total</b>	<b>\$2,752,107.28</b>

**Section 2: Tuition Paid to Institution Types During Fiscal Year**

	Tuition Paid For Nonspecial Education	Tuition Paid For Special Education	Total
1 1306 Institutions			
2 Institutionalized Children's Programs			
3 Juveniles Incarcerated in Adult Facilities			
4 Residential Treatment Facilities			
5 Other Local Education Agencies		804,251.13	804,251.13
6 Brick and Mortar Charter Schools	472,279.67	117,263.84	589,543.51
7 Cyber Charter Schools	365,767.73	220,110.24	585,877.97
8 Career and Technology Centers	293,340.98	132,003.00	425,343.98
9 Approved Private Schools		337,204.49	337,204.49
10 PA Chartered Schools for the Deaf and Blind		735.00	735.00
11 Private Residential Rehabilitative Institutions		9,151.20	9,151.20
12 Juvenile Detention Centers			
13 Special Program Jointures			
14 Other Tuition Not Included Elsewhere In This Section			
<b>Section 2 Total</b>	<b>\$1,131,388.38</b>	<b>\$1,620,718.90</b>	<b>\$2,752,107.28</b>

LEA : 127042853 Freedom Area SD

Printed 1/19/2022 1:42:37 PM

**Food Service / Cafeteria Operations Fund (51)**

**3000 Operation of Non-Instructional Services**

**Total**

**100 Personnel Services – Salaries**

100 Personnel Services – Salaries 244,821.21

**Total Personnel Services – Salaries \$244,821.21**

**200 Personnel Services – Employee Benefits**

210 Group Insurance – Contracted Provider 267.21

220 Social Security Contributions 19,548.73

230 PSERS Retirement Contributions 169,008.14

260 Workers' Compensation 1,776.52

270 Group Insurance – Self-Insurance 55,375.41

292 Health Savings Accounts (1,580.00)

**Total Personnel Services – Employee Benefits \$244,396.01**

**300 Purchased Professional and Technical Services**

329 Professional Educational Services – Other 33.29

**Total Purchased Professional and Technical Services \$33.29**

**400 Purchased Property Services**

430 Repairs and Maintenance Services 3,351.56

**Total Purchased Property Services \$3,351.56**

**600 Supplies**

610 General Supplies 20,741.60

630 Food 229,584.54

**Total Supplies \$250,326.14**

**700 Property**

740 Depreciation 21,708.23

**Total Property \$21,708.23**

**800 Other Objects**

810 Dues and Fees 3,534.55

**Total Other Objects \$3,534.55**

**Total 3000 Operation of Non-Instructional Services \$768,170.99**

**Food Service / Cafeteria Operations Fund (51)**

	<u>Elementary</u>	<u>Secondary</u>	<u>Federal</u>	<u>Total</u>
<b>3100 Food Services</b>				
<b>100 Personnel Services – Salaries</b>				
100 Personnel Services – Salaries				244,821.21
<b>Total Personnel Services – Salaries</b>				<b>\$244,821.21</b>
<b>200 Personnel Services – Employee Benefits</b>				
210 Group Insurance – Contracted Provider				267.21
220 Social Security Contributions				19,548.73
230 PSERS Retirement Contributions				169,008.14
260 Workers' Compensation				1,776.52
270 Group Insurance – Self-Insurance				55,375.41
292 Health Savings Accounts				(1,580.00)
<b>Total Personnel Services – Employee Benefits</b>				<b>\$244,396.01</b>
<b>300 Purchased Professional and Technical Services</b>				
329 Professional Educational Services – Other				33.29
<b>Total Purchased Professional and Technical Services</b>				<b>\$33.29</b>
<b>400 Purchased Property Services</b>				
430 Repairs and Maintenance Services				3,351.56
<b>Total Purchased Property Services</b>				<b>\$3,351.56</b>
<b>600 Supplies</b>				
610 General Supplies				20,741.60
630 Food				229,584.54
<b>Total Supplies</b>				<b>\$250,326.14</b>
<b>700 Property</b>				
740 Depreciation				21,708.23
<b>Total Property</b>				<b>\$21,708.23</b>
<b>800 Other Objects</b>				
810 Dues and Fees				3,534.55
<b>Total Other Objects</b>				<b>\$3,534.55</b>
<b>Total 3100 Food Services</b>				<b>\$768,170.99</b>

	<u>Food Service(51)</u>	<u>Child Care Operations(52)</u>	<u>Other Enterprise(58)</u>	<u>Internal Service(60)</u>	<u>Total</u>
<b>3000 <u>Operation of Non-Instructional Services</u></b>					
3100 Food Services	768,170.99				768,170.99
<b>Total Operation of Non-Instructional Services</b>	<b>\$768,170.99</b>				<b>\$768,170.99</b>
<b>TOTAL ACTUAL EXPENDITURES &amp; OTHER FINANCING USES</b>	<b>\$768,170.99</b>				<b>\$768,170.99</b>



LEA : 127042853 Freedom Area SD

Printed 1/19/2022 1:43:01 PM

Fund	School	School Number	Local Personnel	Local Nonpersonnel	State Personnel	State Nonpersonnel	Federal Personnel	Federal Nonpersonnel	Total	Explanation
10	Freedom Area EI Sch	8357	2,891,215.32	1,248,757.64	3,566,428.83	1,540,392.09	465,923.87	163,984.28	9,876,702.03	
	Freedom Area MS	8356	1,848,480.85	820,622.91	2,280,174.49	1,012,270.92	113,318.44	148,711.25	6,223,578.86	
	Freedom Area SHS	6563	1,825,603.61	810,466.68	2,251,954.50	999,742.80	111,915.98	146,870.76	6,146,554.33	
<b>Total</b>			<b>6,565,299.78</b>	<b>2,879,847.23</b>	<b>8,098,557.82</b>	<b>3,552,405.81</b>	<b>691,158.29</b>	<b>459,566.29</b>	<b>22,246,835.22</b>	